

DEWALT®

English (*original instructions*)

6

简体中文

18



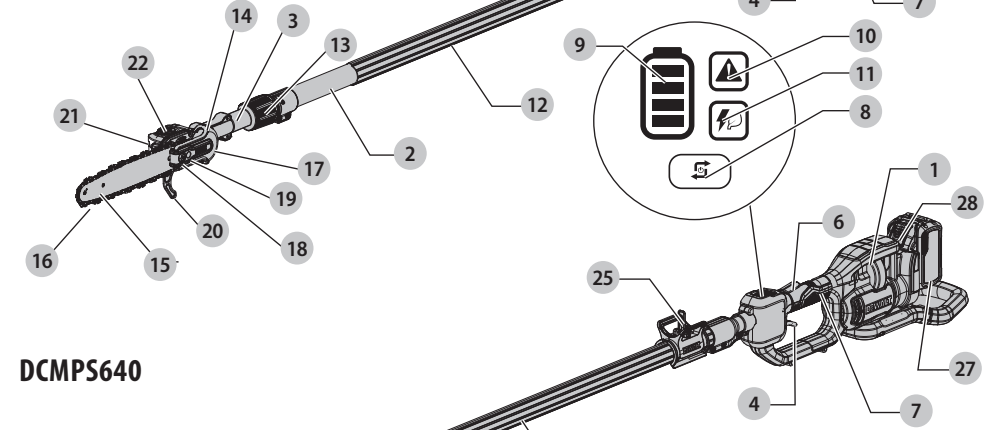
www.DEWALT.com

DCMPS635

DCMPS640

Fig. A
图 A

DCMPS635



DCMPS640

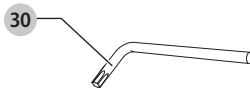
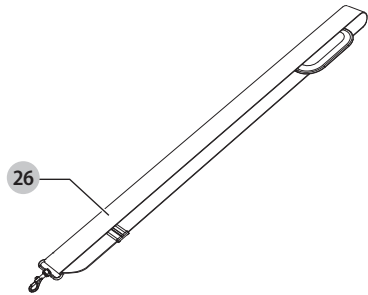
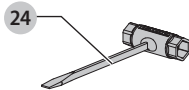
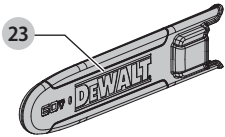
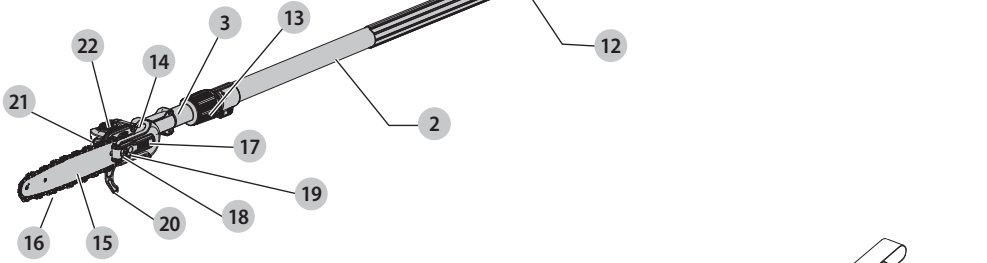


Fig. B

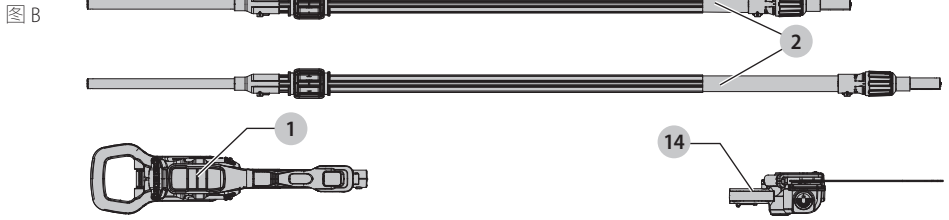


Fig. C

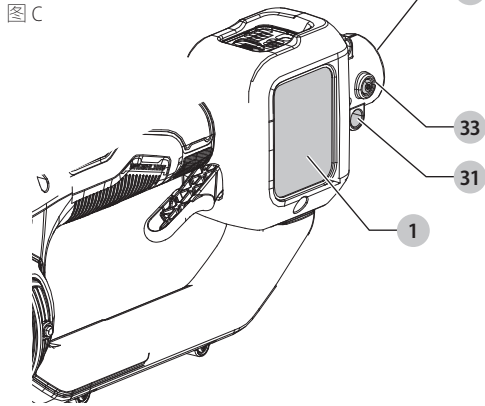


Fig. D

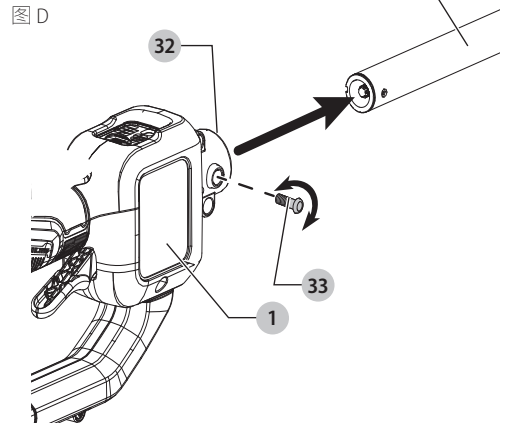


Fig. E

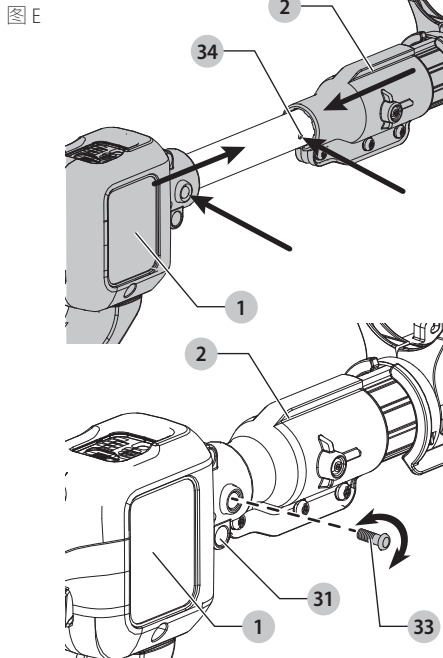


Fig. F

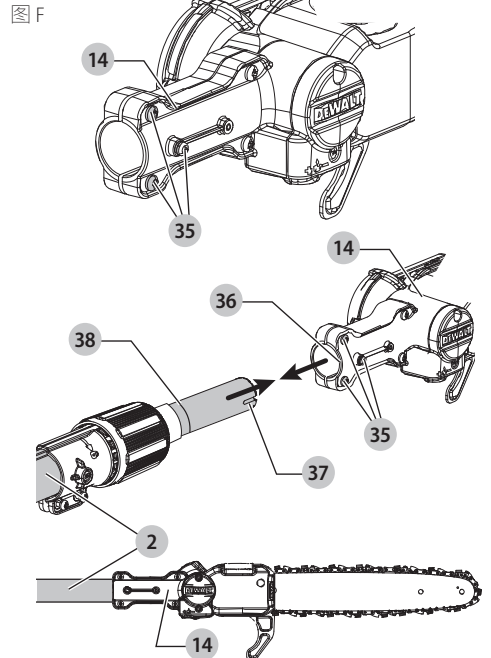


Fig. G

图 G

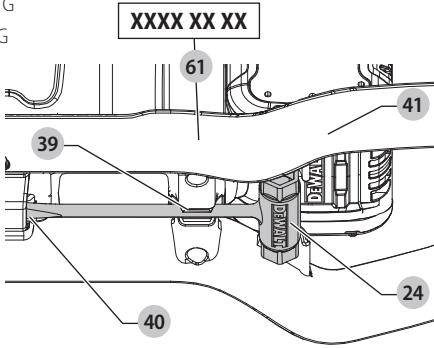


Fig. H

图 H

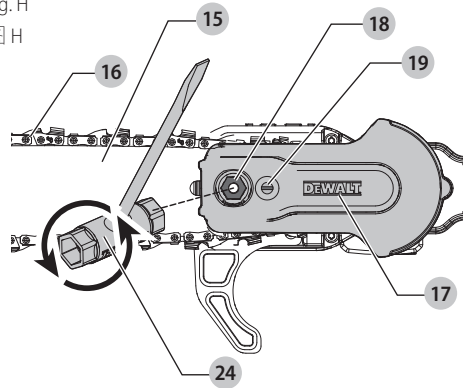


Fig. I

图 I

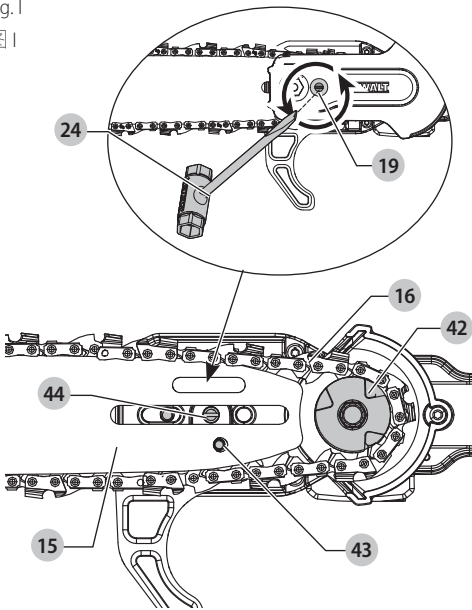


Fig. J

图 J

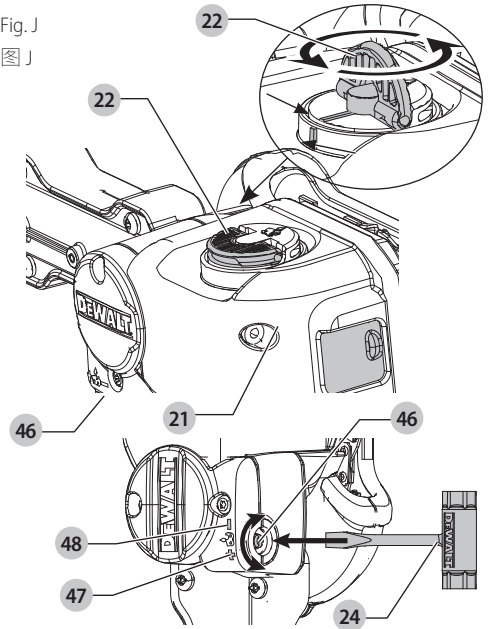


Fig. K

图 K

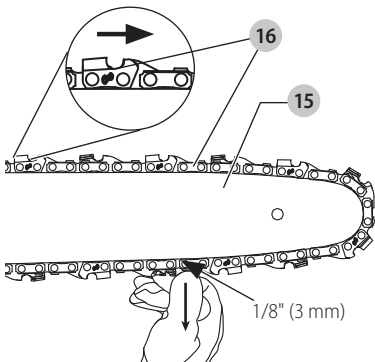


Fig. L

图 L

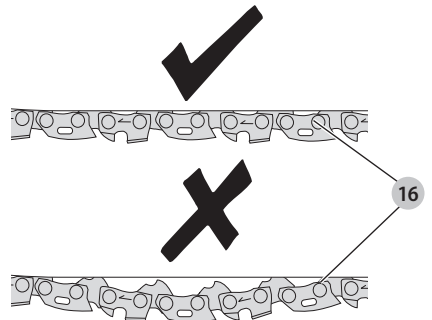


Fig. M

图 M

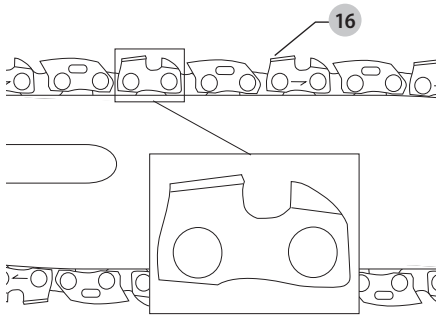


Fig. N

图 N

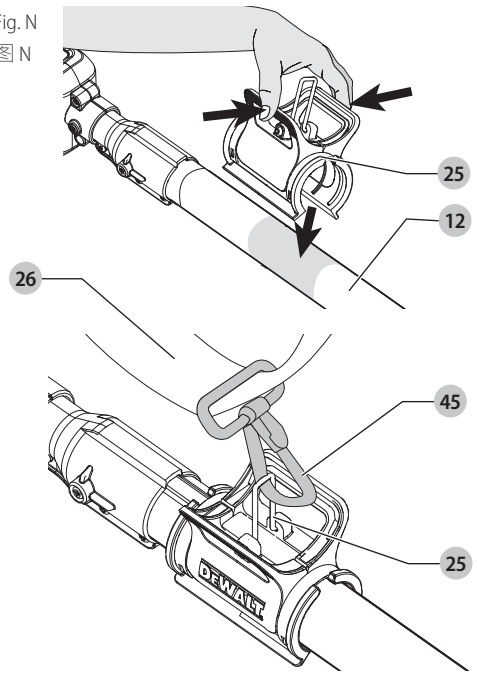


Fig. O

图 O

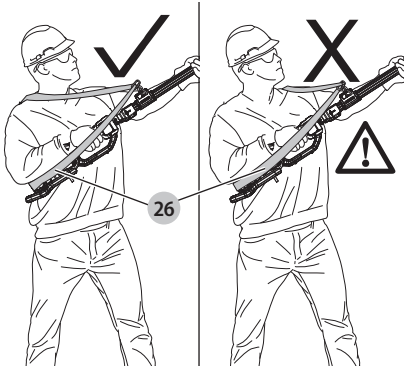


Fig. P

图 P

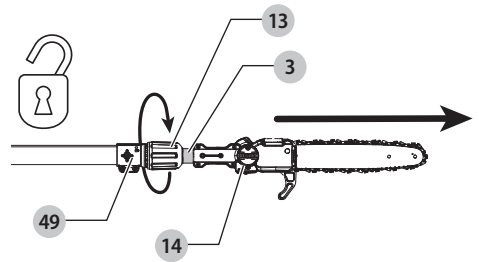


Fig. Q

图 Q

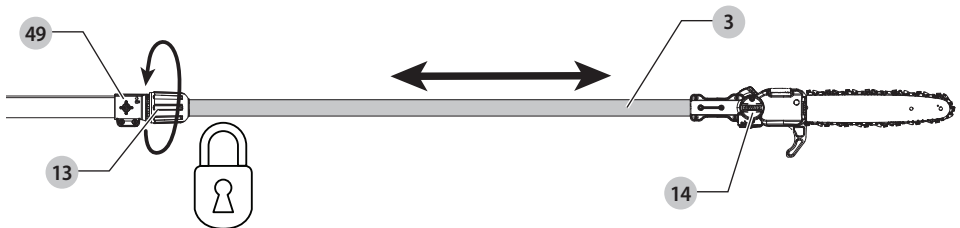


Fig. R
图 R

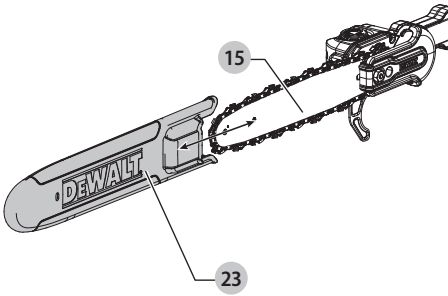


Fig. S
图 S

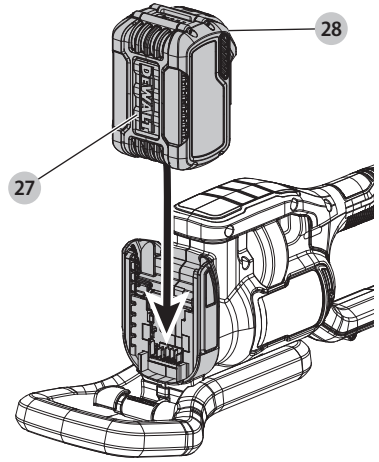


Fig. T
图 T

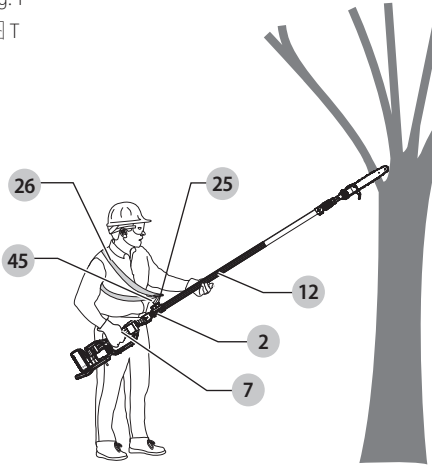


Fig. U
图 U

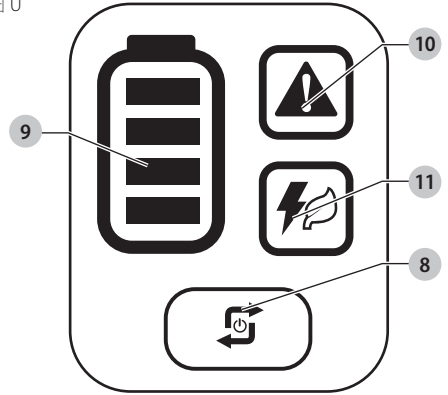


Fig. V
图 V

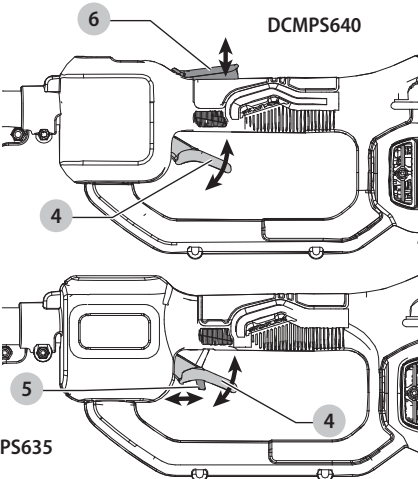


Fig. W
图 W

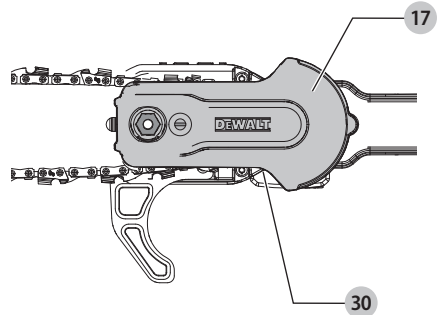


Fig. X
图 X

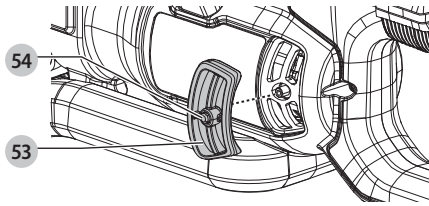


Fig. Y
图 Y

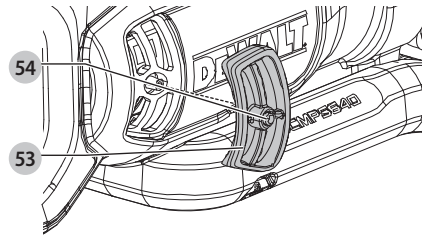


Fig. Z
图 Z

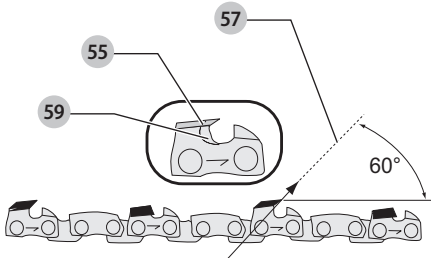


Fig. AA
图 AA

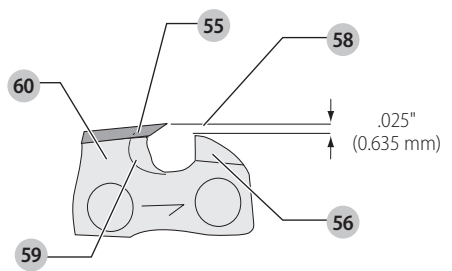
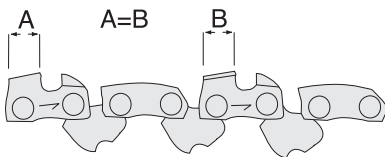



Fig. BB
图 BB



POLE SAW


DCMPS635, DCMPS640

 **WARNING:** Read all safety warnings, instructions, illustrations, and specifications in this manual, including the battery and charger sections provided in an original tool manual or the separate Batteries and Chargers manual. Manuals can be obtained by contacting Customer Service (refer to the back page of this manual).




Technical Data


		DCMPS635	DCMPS640
Voltage	V_{DC}	54 (60 Max)	54 (60 Max)
Battery type		Li-Ion	Li-Ion
Bar Length	cm	25	30
Maximum Chain Speed (no-load)	m/s	15.6	21.3
Maximum Cutting Length	cm	20	25
Oil Capacity	ml	95	95
Weight (without battery pack)	kg	6.9	7.3


 **WARNING:** To reduce the risk of injury, read the instruction manual.

Definitions: Safety Guidelines


The definitions below describe the level of severity for each signal word. Please read the manual and pay attention to these symbols.

 **DANGER:** Indicates an imminently hazardous situation which, if not avoided, **will** result in **death or serious injury**.

 **WARNING:** Indicates a potentially hazardous situation which, if not avoided, **could** result in **death or serious injury**.

 **CAUTION:** Indicates a potentially hazardous situation which, if not avoided, **may** result in **minor or moderate injury**.

NOTICE: Indicates a practice **not related to personal injury** which, if not avoided, **may** result in **property damage**.

 Denotes risk of electric shock.

 Denotes risk of fire.

GENERAL POWER TOOL SAFETY WARNINGS

 **WARNING:** Read all safety warnings, instructions, illustrations and specifications provided with this power tool. Failure to follow all instructions listed below may result in electric shock, fire and/or serious injury.

SAVE ALL WARNINGS AND INSTRUCTIONS FOR FUTURE REFERENCE

The term "power tool" in the warnings refers to your mains-operated (corded) power tool or battery-operated (cordless) power tool.

1) Work Area Safety

a) **Keep work area clean and well lit.** Cluttered or dark areas invite accidents.

b) **Do not operate power tools in explosive atmospheres, such as in the presence of flammable liquids, gases or dust.** Power tools create sparks which may ignite the dust or fumes.

c) **Keep children and bystanders away while operating a power tool.** Distractions can cause you to lose control.

2) Electrical Safety

a) **Power tool plugs must match the outlet. Never modify the plug in any way. Do not use any adapter plugs with earthed (grounded) power tools.** Unmodified plugs and matching outlets will reduce risk of electric shock.

b) **Avoid body contact with earthed or grounded surfaces, such as pipes, radiators, ranges and refrigerators.** There is an increased risk of electric shock if your body is earthed or grounded.

c) **Do not expose power tools to rain or wet conditions.** Water entering a power tool will increase the risk of electric shock.

d) **Do not abuse the cord. Never use the cord for carrying, pulling or unplugging the power tool. Keep cord away from heat, oil, sharp edges or moving parts.** Damaged or entangled cords increase the risk of electric shock.

e) **When operating a power tool outdoors, use an extension cord suitable for outdoor use.** Use of a cord suitable for outdoor use reduces the risk of electric shock.

f) **If operating a power tool in a damp location is unavoidable, use a residual current device (RCD) protected supply.** Use of an RCD reduces the risk of electric shock.

3) Personal Safety

a) **Stay alert, watch what you are doing and use common sense when operating a power tool. Do not use a power tool while you are tired or under the influence of drugs, alcohol or medication.** A moment of inattention while operating power tools may result in serious personal injury.

b) **Use personal protective equipment. Always wear eye protection.** Protective equipment such as a dust mask, non-skid safety shoes, hard hat or hearing protection used for appropriate conditions will reduce personal injuries.

c) **Prevent unintentional starting. Ensure the switch is in the off position before connecting to power source and/or battery pack, picking up or carrying the tool.** Carrying power tools with your finger on the switch or energising power tools that have the switch on invites accidents.

d) **Remove any adjusting key or wrench before turning the power tool on.** A wrench or a key left attached to a rotating part of the power tool may result in personal injury.

e) **Do not overreach. Keep proper footing and balance at all times.** This enables better control of the power tool in unexpected situations.

f) **Dress properly. Do not wear loose clothing or jewellery. Keep your hair and clothing away from moving parts.** Loose clothes, jewellery or long hair can be caught in moving parts.

- g) **If devices are provided for the connection of dust extraction and collection facilities, ensure these are connected and properly used.** Use of dust collection can reduce dust-related hazards.
- h) **Do not let familiarity gained from frequent use of tools allow you to become complacent and ignore tool safety principles.** A careless action can cause severe injury within a fraction of a second.

4) Power Tool Use and Care

- a) **Do not force the power tool. Use the correct power tool for your application.** The correct power tool will do the job better and safer at the rate for which it was designed.
- b) **Do not use the power tool if the switch does not turn it on and off.** Any power tool that cannot be controlled with the switch is dangerous and must be repaired.
- c) **Disconnect the plug from the power source and/or remove the battery pack, if detachable, from the power tool before making any adjustments, changing accessories, or storing power tools.** Such preventive safety measures reduce the risk of starting the power tool accidentally.
- d) **Store idle power tools out of the reach of children and do not allow persons unfamiliar with the power tool or these instructions to operate the power tool.** Power tools are dangerous in the hands of untrained users.
- e) **Maintain power tools and accessories. Check for misalignment or binding of moving parts, breakage of parts and any other condition that may affect the power tool's operation. If damaged, have the power tool repaired before use.** Many accidents are caused by poorly maintained power tools.
- f) **Keep cutting tools sharp and clean.** Properly maintained cutting tools with sharp cutting edges are less likely to bind and are easier to control.
- g) **Use the power tool, accessories and tool bits, etc. in accordance with these instructions, taking into account the working conditions and the work to be performed.** Use of the power tool for operations different from those intended could result in a hazardous situation.
- h) **Keep handles and grasping surfaces dry, clean and free from oil and grease.** Slippery handles and grasping surfaces do not allow for safe handling and control of the tool in unexpected situations.

5) Battery Tool Use and Care

- a) **Recharge only with the charger specified by the manufacturer.** A charger that is suitable for one type of battery pack may create a risk of fire when used with another battery pack.
- b) **Use power tools only with specifically designated battery packs.** Use of any other battery packs may create a risk of injury and fire.
- c) **When battery pack is not in use, keep it away from other metal objects, like paper clips, coins, keys, nails, screws or other small metal objects, that can make a connection from one terminal to another.** Shorting the battery terminals together may cause burns or a fire.
- d) **Under abusive conditions, liquid may be ejected from the battery; avoid contact. If contact accidentally occurs, flush with water. If liquid contacts eyes, additionally seek medical help.** Liquid ejected from the battery may cause irritation or burns.
- e) **Do not use a battery pack or tool that is damaged or modified.** Damaged or modified batteries may exhibit unpredictable behaviour resulting in fire, explosion or risk of injury.

f) **Do not expose a battery pack or tool to fire or excessive temperature.** Exposure to fire or temperature above 130 °C may cause explosion.

g) **Follow all charging instructions and do not charge the battery pack or tool outside the temperature range specified in the instructions.** Charging improperly or at temperatures outside the specified range may damage the battery and increase the risk of fire.

6) Service

- a) **Have your power tool serviced by a qualified repair person using only identical replacement parts.** This will ensure that the safety of the power tool is maintained.
- b) **Never service damaged battery packs.** Service of battery packs should only be performed by the manufacturer or authorised service providers.

POLE-MOUNTED PRUNER SAFETY WARNINGS:

- a) **Keep all parts of the body away from the saw chain or saw blade when the pole-mounted pruner is operating. Before you start the pole-mounted pruner, make sure the saw chain or saw blade is not contacting anything.** A moment of inattention while operating the pole-mounted pruner may result in injury to yourself or others.
- b) **Always use two hands when operating the pole-mounted pruner.** Hold the pole-mounted pruner with both hands to avoid loss of control.
- c) **To reduce the risk of electrocution, never use the pole-mounted pruner near any electrical power lines.** Contact with or use near power lines may cause serious injury or electric shock resulting in death.
- d) **Hold the pole-mounted pruner by insulated gripping surfaces only, because the saw chain or saw blade may contact hidden wiring or its own cord.** Saw chains or saw blades contacting a "live" wire may make exposed metal parts of the pole-mounted pruner "live" and could give the operator an electric shock.
- e) **Wear eye and ear protection. Further protective equipment for hands and slip-resistant footwear is recommended.** Adequate protective equipment will reduce the risk of personal injury.
- f) **Always use head protection when operating the pole-mounted pruner overhead.** Falling debris can result in serious personal injury.
- g) **Always keep proper footing and operate the pole-mounted pruner only when standing on the ground.** Slippery or unstable surfaces may cause a loss of balance or control of the machine.
- h) **Do not operate a pole-mounted pruner in a tree, on a ladder, or any unstable support.** Operation of a pole-mounted pruner in this manner may result in loss of balance, loss of control and personal injury.
- i) **Keep all power cords and cables away from cutting area.** Power cords or cables may be hidden in trees and can be accidentally cut by the saw chain or saw blade.
- j) **Do not use the pole-mounted pruner in bad weather conditions, especially when there is a risk of lightning.** This decreases the risk of being struck by lightning.
- k) **When cutting a limb that is under tension, be alert for spring back.** When the tension in the wood fibres is released, the

spring-loaded limb may strike the operator and/or throw the pole-mounted pruner out of control.

l) **Use extreme caution when cutting brush and saplings.**

The slender material may catch the saw chain or saw blade and be whipped toward you or pull you off balance.

m) **When carrying the pole-mounted pruner with the machine switched off, take care not to operate any power switch and keep the saw chain or saw blade away from your body.** Proper carrying of the pole-mounted pruner will reduce the likelihood of accidental contact with the saw chain or saw blade.

n) **When transporting or storing the pole-mounted pruner, always fit the guide bar or saw blade cover.** Proper handling of the pole-mounted pruner will reduce the likelihood of accidental contact with the moving saw chain or saw blade.

o) **When clearing jammed material or servicing the pole-mounted pruner, make sure all power switches are off and the battery pack is disconnected.** Unexpected actuation of the pole-mounted pruner while clearing jammed material or servicing may result in serious personal injury.

p) **Cut wood only. Do not use pole-mounted pruner for purposes not intended. For example: do not use the pole-mounted pruner for cutting plastic, metal, masonry or non-wood building materials.** Use of the pole-mounted pruner for operations different than intended could result in a hazardous situation.

IMPORTANT SAFETY INSTRUCTIONS

▲ WARNING: When using electric gardening appliances, basic safety precautions should always be followed to reduce risk of fire, electric shock, and personal injury, including the following.

▲ WARNING: To reduce risk of injury:

- Before any use, be sure everyone using this unit reads and understands all safety instructions and other information contained in this manual.
- Save these instructions and review frequently.

1. **Avoid Dangerous Environments – DO NOT use appliances in damp or wet locations. DO NOT operate portable electric appliances in gaseous or explosive atmospheres.** Motors in these appliances normally spark, and the sparks might ignite fumes.

2. **Don't Use In Rain.**

3. **Keep All Bystanders Away** – at a safe distance from work area, especially children.

4. **Dress Properly** – Do not wear loose clothing or jewelry. They can be caught in moving parts. Use of rubber gloves and substantial footwear is recommended when working outdoors. Wear protective hair covering to contain long hair.

5. **Always Wear Eye Protection – Wear approved eye protection at all times when battery is installed.** Also use face or dust mask and hearing protection. Safety glasses and hearing protection are available at extra cost at your local DEWALT Service Centre or authorised service facility.

6. **Use Right Appliance** – Do not use appliance for any job except that for which it is intended.

7. **Avoid Accidentally Starting** – Don't carry with finger on trigger when battery is installed.

8. **Don't grasp the exposed cutting blades or cutting edges when picking up or holding the appliance.**

9. **Don't Force Appliance** – It will do the job better and with less likelihood of a risk of injury at the rate for which it was designed.

10. **Don't Overreach** – Keep proper footing and balance at all times.

11. **Stay alert, watch what you are doing and use common sense when operating a power tool. Do not use a power tool while you are tired or under the influence of drugs, alcohol or medication.** A moment of inattention while operating power tools may result in serious personal injury.

12. **Prevent unintentional starting. Ensure the switch is in the off-position before connecting to power source and/or battery pack, picking up or carrying the tool.** Carrying power tools with your finger on the switch or energizing power tools that have the switch on invites accidents.

13. **Disconnect Appliance** – Remove the battery when not in use, before servicing, when changing accessories such as blades, and the like.

14. **Store Idle Appliances Indoors** – When not in use, appliances should be stored indoors in dry, and high or locked-up place – out of reach of children.

15. **Maintain Appliance With Care** – Keep cutting edge sharp and clean for best performance and to reduce the risk of injury. Follow instructions for lubricating and changing accessories. Inspect appliance power source periodically, and if damaged, have it repaired by an authorized service facility. Keep handles dry, clean, and free from oil and grease.

16. **Check Damaged Parts** – Before further use of the appliance, a guard or other part that is damaged should be carefully checked to determine that it will operate properly and perform its intended function. Check for alignment of moving parts, binding of moving parts, breakage of parts, mounting, and any other condition that may affect its operation. A guard or other part that is damaged should be properly repaired or replaced by an authorized service center unless indicated elsewhere in this manual.

17. **Damage to Unit** – If you strike or become entangled with a foreign object, stop appliance immediately, remove battery, check for damage and have any damage repaired before further operation is attempted.

18. **DO NOT immerse appliance in water or squirt it with a hose. DO NOT allow any liquid to get inside it.** If appliance does get wet, allow to dry for a minimum of 48 hours.

19. **DO NOT** store the appliance on or adjacent to fertilizers or chemicals.

SAVE THESE INSTRUCTIONS

▲ WARNING - Do not operate near electrical power lines. The unit has not been designed to provide protection from electric shock in the event of contact with overhead electric lines. Consult local regulations for safe distances from overhead electric power lines and ensure that the operating position is safe and secure before operating the pole saw.

- **Keep all parts of the body away from the saw chain. Do not remove cut material or hold material to be cut when blades are moving. Make sure the switch is off when clearing jammed material. Blades coast after turn off.** A moment of inattention while operating the pole saw may result in serious personal injury.

- **Carry the pole saw by the handle with the saw chain stopped.** When transporting or storing the pole saw always remove battery and fit the saw chain scabbard. Proper handling of the pole saw will reduce possible personal injury from the saw chain.

- **Hold the pole saw by insulated gripping surfaces only, because the cutter blade may contact hidden wiring.** A saw chain contacting a "live" wire may make exposed metal parts of the tool "live" and could give the operator an electric shock.
- **Do not use the pole saw in bad weather conditions, especially when there is a risk of lightning.** This decreases the risk of being struck by lightning.
- **To reduce the risk of electrocution, never use near any electrical power lines.** Contact with or use near power lines may cause serious injury or electric shock resulting in death.
- **Always use two hands when operating the pole saw.** Hold the pole saw with both hands to avoid loss of control.
- **Always use head protection when operating the pole saw overhead.** Falling debris can result in serious personal injury.
- **Remove or disconnect battery before servicing, cleaning or removing material from the gardening appliance.**
- **Do not let familiarity gained from frequent use of tools allow you to become complacent and ignore tool safety principles.** A careless action can cause severe injury within a fraction of a second.

SPECIFIC SAFETY RULES

Before Operating Pole Saw

- **For safe operation, read and understand all instructions before using the pole saw.** Follow all safety instructions. Failure to follow all safety instructions listed below, can result in serious personal injury.
- **Watch what you are doing.** Use common sense. Do not operate pole saw when you are tired.
- **Use pole saw for cutting tree branches only.** Do not use pole saw for purposes not intended. Do not use for cutting other items.
- **Only well-instructed adults should operate pole saw.** Never allow children to operate.
- **Do not allow children or untrained individuals to use this unit.**
- **Wear the following safety gear when operating pole saw:**
 - heavy-duty gloves
 - steel-toed safety footwear with non-skid soles
 - safety glasses, goggles or face screen
 - safety hard hat
 - ear muffs or ear plugs
 - face or dust mask (if working in dusty areas)
- **Wear heavy long pants and boots.** Do not wear loose fitting clothing, short pants, jewelry of any kind, or go barefoot.
- **Secure long hair to prevent entanglement in any moving parts.**
- **Before cutting, always provide the following:**
 - clear work area
 - secure footing
 - planned retreat path from falling limbs
- **Inspect tree before trimming.** Make allowance for branches to fall freely to the ground.
- **Do not use your pole saw to fell saplings.**

While Operating Pole Saw

- ▲ **DANGER: To reduce the risk of electric shock do not use on wet surfaces.** Do not expose to rain. Store indoors.
- ▲ **DANGER: Avoid Unintentional Starting** – with battery installed, don't carry appliance with with finger on switch. Be sure switch is off when installing battery.

- **Hold the tool using only the designated gripping surfaces:** the main pole handle and the pole.
- **Stay alert.** Use common sense while operating the unit.
- **Keep work area clean.** Cluttered areas invite injuries.
- **Always remove battery from pole saw when finished cutting or when left unattended.**
- **Keep children, animals and bystanders at least 15 m (50') away from pole saw.** Only pole saw user should be in work area.
- **Do not use the pole saw to cut down trees.**
- **Do not grasp the exposed saw chain when picking up or holding the pole saw.**
- **Keep finger off trigger until ready to make cut.**
- **Before starting pole saw, make sure chain is not touching anything.**
- **Keep all parts of body away from chain when pole saw is running.**
- **Do not force pole saw while cutting.** Apply light pressure. It will do the job better and safer at the rate for which it was intended.
- **Carry pole saw from one place to another:**
 - with battery removed,
 - fingers off/away from trigger,
 - by holding pole at balance point, and
 - with guide bar and chain to rear and with scabbard attached.
- **Do not cut small brush and saplings with the pole saw.** Slender matter may catch in the chain and be whipped toward you. This could also pull you off balance.
- **Do not operate in poor lighting.**
- **Keep firm footing and balance.** Do not overreach. Overreaching can result in loss of balance.
- **Keep all parts of your body away from any moving part.**
- **Do not, under any circumstance, use any attachment or accessory on this product, which was not provided with the product, or identified as appropriate for use with this product in this instruction manual.**
- **Inspect pole saw before each use and after dropping or other impacts.** Ensure there are no significant defects or damage.

Do Not Operate Pole Saw:

- while under the influence of alcohol, medication, or drugs.
- in rain or in damp or wet areas.
- where highly flammable liquids or gases are present.
- if pole saw is damaged, adjusted incorrectly, or not fully and securely assembled.
- if trigger does not turn pole saw on and off. Chain must stop moving when you release trigger. Have faulty switch replaced by authorized service center. See **Accessories** under **Maintenance**.
- while in a hurry.
- while in a tree or on a ladder.
- while on platforms.
- during high wind or storming weather.
- Do not use in buckets or on arial booms unless specifically trained to do so and in accordance with training materials. Follow all instructions and safety warnings of bucket or arial boom being used. Operating at height without proper training could increase the risk of personal injury or death. Make sure you are secured. Keep scabbard installed when not in use. Do not overreach. Extend pole only as far as necessary. Do not operate near power lines.

GENERAL SAFETY RULES

▲ DANGER: Shock Hazard. Serious injury or death from electrocution if power lines are contacted. Never use near any electrical source, wires, or power lines.

▲ WARNING: For safe operation read and understand the instruction manual. Wear face shield (and/or safety glasses) and hard hat to protect against falling debris. Always have a clear work area, retreat path, and be aware of limb/branch location to avoid falling limbs and debris. Keep bystanders 15 m (50') away when operating saw. To reduce the risk of electric shock do not use on wet surfaces. Do not expose to rain. Store indoors.

▲ WARNING: This product (not including the battery pack or charger) provides some level of protection from dust (limited ingress) and liquids (light splashing) during normal and reasonably foreseeable use. The battery pack and charger do not have an IP rating on their own. NEVER submerge the product, battery or charger in liquid.

- To protect yourself from falling branches do not stand directly under the branch or limb being cut. This unit should not be held at an angle over 60° from ground level.

- Keep the handles dry, clean, and free of oil.

- Before you start the unit, make sure the chain is not contacting any object.

- Make sure the cutting chain has stopped before setting the unit down.

Service

- Tool service must be performed only by qualified repair personnel. Service or maintenance performed by unqualified personnel could result in a risk of injury. Refer to the **Maintenance** section of this manual.

- When servicing a tool, use only identical replacement parts.

Follow instructions in the **Maintenance** section of this manual. Use of unauthorized parts or failure to follow maintenance instructions may create a risk of electric shock or injury.

Guard Against Kickback

▲ WARNING: KICKBACK may occur when the nose or tip of the guide bar touches an object, or when the wood closes in and pinches the saw chain in the cut. Tip contact in some cases may cause a lightning fast reverse reaction, kicking the guide bar up and back towards the operator. Pinching the saw chain along the top of the guide bar may push the guide bar rapidly back towards the operator. Either of these reactions may cause you to lose control of the saw which could result in serious injury to user.

▲ The following precautions should be followed to minimize kickback:

- Hold the saw firmly with both hands when the unit is running. Use a firm grip with thumbs and fingers encircling the main pole handle and the insulated hand grip. DO NOT use the pole as a grasping surface.

- Do not overreach.

- Keep proper footing and balance at all times.

- Don't let the nose of the guide bar contact a log, branch, ground or other obstruction.

- Do not extend pole saw handle above shoulder height.

- Use devices such as reduced kickback chain, chain braking system and special guide bars that reduce the risks associated with kickback.

- Only use replacement bars and chains specified by the manufacturer or the equivalent.

- Never let the moving chain contact any object at the tip of the guide bar.

- Keep the working area free from obstructions such as other trees, branches, rocks, fences, stumps, etc. Eliminate or avoid any obstruction that your saw chain could hit while you are cutting through a particular log or branch.

- Keep your saw chain sharp and properly tensioned. A loose or dull chain can increase the chance of kickback. Check tension at regular intervals with the motor stopped and battery removed.

- Begin and continue cutting only with the chain moving at full speed. If the chain is moving at a slower speed, there is a greater chance for kickback to occur.

- Cut one branch at a time.

- Use extreme caution when re-entering a previous cut. Engage spiked bumpers into wood and allow chain to reach full speed before proceeding with cut.

- Do not attempt plunge cuts or bore cuts.

- Watch for shifting branches or other forces that could close a cut and pinch or fall into chain.

Kickback Safety Features

▲ WARNING: The following features are included on your pole saw to help reduce the hazard of kickback; however such features will not totally eliminate this dangerous reaction. As a pole saw user do not rely only on safety devices. You must follow all safety precautions, instructions, and maintenance in this manual to help avoid kickback and other forces which can result in serious injury.

- **Reduced-Kickback Guide Bar**, designed with a small radius tip which reduces the size of the kickback danger zone on bar tip. A reduced- kickback guide bar is one which has been demonstrated to significantly reduce the number and seriousness of kickbacks when tested in accordance with safety requirements for electric chain saws.

- **Reduced Kickback Chain**, designed with a contoured depth gauge and guard link which deflect kickback force and allow wood to gradually ride into the cutter. A reduced-kickback chain is a chain which has met kickback performance requirements when tested on the representative sample of chain saws.

Pole Saw Names and Terms

- **Drive Sprocket or Sprocket** - The toothed part that drives the saw chain.

- **Guide Bar** - A solid railed structure that supports and guides the saw chain.

- **Guide Bar Scabbard** - Enclosure fitted over guide bar to prevent tooth contact when saw is not in use.

- **Kickback** - The backward or upward motion, or both of the top area of the guide bar contacts any object such as a log or branch, or when the wood closes in and pinches the saw chain in the cut.

- **Reduced Kickback Chain** - A chain that complies with the kickback performance requirements. (when tested on a representative sample of chain saws)

- **Reduced Kickback Guide Bar** - A guide bar which has been demonstrated to reduce kickback significantly.

- **Replacement Saw Chain** - A chain that complies with kickback performance requirements when tested with specific chain saws. It may not meet performance requirements when used with other saws.

- **Saw Chain** - A loop of chain having cutting teeth, that cut the wood, and that is driven by the motor and is supported by the guide bar.

- **Spiked Bumper (Spike)** - The pointed tooth or teeth for use when pruning to pivot the saw and maintain position while sawing.

- **Switch** - A device that when operated will complete or interrupt an electrical power circuit to the motor of the chain saw.
- **Switch Lockout** - A movable stop that prevents the unintentional operation of the switch until manually actuated.
- **Trimming (Pruning)** - Process of cutting limbs from a tree.
- **Undercut** - An upward cut from underside of a log or limb. This is done while in normal cutting position and cutting with top of guide bar.

Storage

1. **Store indoors.** The best storage place is one that is cool and dry away from direct sunlight, excess heat or cold and out of the reach of children.
2. **Always reduce the tension off the chain again after finishing work. The chain contracts as it cools down. If tension is not reduced, it can damage the saw.**

Residual Risks

In spite of the application of the relevant safety regulations and the implementation of safety devices, certain residual risks cannot be avoided. These are:

- Impairment of hearing.
- Risk of personal injury due to flying particles.
- Risk of burns due to accessories becoming hot during operation.
- Risk of personal injury due to prolonged use.

SAVE THESE INSTRUCTIONS

Battery Type

Refer to the battery/charger manual for more information.

Package Contents

The DCMP5635, DCMP5640 package contains:

- 1 Pole saw
- 1 Guide Bar Cover
- 1 Shoulder strap
- 1 4.0 mm Round File
- 1 T20 wrench
- 1 Strap mount
- 1 Wrench
- 1 Instruction manual

NOTE: Battery packs, chargers and kitboxes are not included with N models. Battery packs and chargers are not included with NT models. Check for damage to the tool, parts or accessories which may have occurred during transport.

- Take the time to thoroughly read and understand this manual prior to operation.

Markings on Tool

The following pictograms are shown on the tool:



Read instruction manual before use.



Wear eye protection.



Wear ear protection.



Do not leave in rain.



Wear head protection.



Wear protective gloves.



Cut hazard. Keep fingers away from slot.



Wear protective footwear.



Rotational direction of the saw chain.



Electrocution hazard. Keep at least 10 m away from overhead lines.



Switch the tool off. Before performing any maintenance on the tool, remove the battery from the tool.



Keep bystanders away.

Date Code Position (Fig. G)

The production date code **61** consists of a 4-digit year followed by a 2-digit week and is extended by a 2-digit factory code.

Description (Fig. A)

▲ WARNING: Never modify the power tool or any part of it. Damage or personal injury could result.

- 1 Powerhead
- 2 Pole assembly
- 3 Telescoping pole
- 4 Trigger switch
- 5 Lock off lever (DCMP5635)
- 6 Operator presence lever
- 7 Main handle
- 8 Speed control button/ Wake-up button
- 9 Battery state of charge LED
- 10 Overload indicator LED
- 11 Speed indicator LEDs
- 12 Insulated hand grip
- 13 Threaded sleeve
- 14 Saw head
- 15 Guide bar
- 16 Saw chain
- 17 Sprocket cover
- 18 Bar lock nut
- 19 Chain tensioning screw
- 20 Branch removal hook
- 21 Oil level indicator
- 22 Oil cap
- 23 Scabbard
- 24 Wrench
- 25 Strap mount
- 26 Shoulder strap

- 27 Battery pack[†]
- 28 Battery release button
- 29 4 mm round file
- 30 T20 wrench

[†]Included in some packages.

NOTE: Check for damage to the tool, parts or accessories which may have occurred during transport.

Intended Use

The DCMP5635, DCMP5640 have been designed for professional and residential trimming applications. The DCMP5635 is ideal for pruning and cutting limbs up to 20 cm (8") in diameter. The DCMP5640 is ideal for pruning and cutting limbs up to 25 cm (10") in diameter. The pole saw is not intended to be operated in a tree, on a ladder, from any unstable support and should always be operated with two hands.

DO NOT use under wet conditions, during heavy winds/storms, or in presence of flammable liquids or gases.

DO NOT use in dark or foggy conditions. This tool is to be used with sufficient light.

These pole saws are professional power tools.

DO NOT let children come into contact with the tool.

- **Young children and the infirm.** This appliance is not intended for use by young children or infirm persons.
- This product is not intended for use by persons (including children) suffering from diminished physical, sensory or mental abilities; lack of experience, knowledge or skills. Children should never be left alone with this product.

ASSEMBLY AND ADJUSTMENTS

▲ WARNING: To reduce the risk of serious personal injury, turn tool off and disconnect battery pack before making any adjustments or removing/installing attachments or accessories. An accidental start-up can cause injury.

▲ WARNING: Use only DEWALT batteries and chargers.

Inserting and Removing the Battery Pack from the Tool (Fig. S)

NOTE: Make sure your battery pack 27 is fully charged.

To Install the Battery Pack into the Tool Handle

1. Align the battery pack with the rails inside the tool's handle (Fig. S).
2. Slide it into the handle until the battery pack is firmly seated in the tool and ensure that you hear the lock snap into place.

To Remove the Battery Pack from the Tool

1. Press the battery release button 28 and firmly pull the battery pack out of the tool handle.
2. Insert battery pack into the charger.

Tool Assembly (Fig. B–F)

▲ WARNING: To reduce the risk of serious personal injury, turn unit off and remove the battery pack before making any adjustments or removing/installing attachments or accessories. An accidental start-up can cause injury.

The pole saw ships in three pieces, powerhead 1, pole assembly 2 and saw head 14. Follow the below instructions to assemble the unit.

Installing the Powerhead to the Pole Assembly (Fig. C–E)

1. Loosen the screw 31 located on the bottom of powerhead input 32 and remove the screw 33 on the middle of the

powerhead input 32 to allow the the powerhead 1 to slide onto the bottom of the pole assembly 2.

2. Slide the powerhead 1 completely onto the bottom of the pole assembly 2 as shown in Fig. C–E.

3. Install the screw 33 on the middle of the powerhead input 32 and align it with the small hole 34 in the bottom of the pole assembly 2. Tighten the screws 31 and 33. Do not overtighten.

Installing the Saw Head to the Pole Assembly (Fig. F)

1. Locate and loosen the three screws 35 located on the saw head 14 as shown in Fig. F. Loosen the screws enough to allow saw head 14 to slide onto the top of the pole assembly 2.

2. Slide the saw head 14 onto the top of the pole assembly 2. Be sure to align the pin 36 with the slot 37 located on the end of the top of the pole assembly 2 to ensure proper orientation of the saw head 14 as shown in Fig. F.

3. Saw head must be inserted onto the pole assembly 2 until it reaches the line icon 38 on the pole assembly 2.

4. Tighten the three screws 35. Do not overtighten.

Wrench Storage (Fig. G)

The wrench 24 is stored in retaining clips 39 located on the foot mount 41.

1. Remove the wrench 24 by lifting the wrench end up and away from the retaining clips 39.
2. Store the wrench in the retaining clips 39 when finished. First install flat screwdriver end of the wrench into the retaining slot 40 and then press the wrench end down until the retaining clips 39 firmly holds the wrench 24 in place.

Installing the Guide Bar and Saw Chain (Fig. A, H–M)

▲ CAUTION: Sharp chain. Always wear protective gloves when handling the chain. The chain is sharp and can cut you when it is not running.

▲ WARNING: Sharp moving chain. To prevent accidental operation, ensure that battery is removed from the tool before performing the following operations. Failure to do this could result in serious personal injury.

If the saw chain 16 and guide bar 15 are packed separately in the carton, the chain has to be attached to the bar, and both must be attached to the body of the tool.

1. Place the saw on a flat, firm surface.
2. Rotate the bar lock nut 18 counterclockwise with the wrench 24 provided.
3. Remove sprocket cover 17, and bar lock nut 18.
4. Wearing protective gloves, grasp the saw chain 16 and wrap it around the guide bar 15, ensuring the teeth are facing the correct direction (Fig. K, M).
5. Ensure the chain is properly set in the slot around the entire guide bar.
6. Place the saw chain around the sprocket 42. While lining up the slot on the guide bar with chain tensioning pin 43, and the bolt 44, on the side of the tool as shown in Fig. I.
7. Once in place, hold the bar still, replace sprocket cover 17. Install the rear of the sprocket cover first, rotate it down and make sure the bolt hole on the cover lines up with the bolt 44, on the main housing.
8. Install the bar lock nut 18 and rotate clockwise with the wrench 24 provided until snug, then loosen nut one full turn, so that the saw chain can be properly tensioned.

9. Rotate the chain tensioning screw **19** clockwise to increase tension as shown in Fig. I. Make sure the saw chain **16** is snug around the guide bar **15**. Tighten the bar lock nut **18** until snug.

10. Follow the instructions in the section **Adjusting Chain Tension**.

Adjusting Chain Tension (Fig. A, H–L)

▲ WARNING: *Incorrect saw chain tension can cause the saw chain to come off of the guide bar and could cause serious injury or death.*

NOTE: Saw chain tension should be adjusted regularly before each use.

1. With the saw still on a firm surface check the saw chain **16** tension. The tension is correct when the saw chain snaps back after being pulled 1/8" (3 mm) away from the guide bar **15** with light force from the middle finger and thumb as shown in Fig. K. There should be no "sag" between the guide bar and the saw chain on the underside as shown in Fig. L.
2. To adjust saw chain tension, loosen bar lock nut **18**.
3. Rotate the chain tension screw **19** in the front of the housing using the flat screwdriver end of the wrench **24**.
4. Check saw chain tension, adjust if needed.
5. Do not over-tension the saw chain as this will lead to excessive wear and will reduce the life of the guide bar and saw chain.
6. Once saw chain tension is correct, tighten bar lock nut **18** until snug. Torque the bar lock nut **18** to 6 ft-lbs (8 Nm)
7. A new chain stretches slightly during the first few hours of use. It is important to check the tension frequently (after disconnecting battery, remove the battery pack) during the first two hours of use.

Replacing the Saw Chain (Fig. A, H, I)

▲ CAUTION: *Sharp chain. Always wear protective gloves when handling the chain. The chain is sharp and can cut you when it is not running.*

▲ WARNING: *Sharp moving chain. To prevent accidental operation, ensure the battery is removed from the tool before performing the following operations. Failure to do this could result in serious personal injury.*

1. To remove the saw chain **16**, place the saw on a flat, firm surface.
2. Remove sprocket cover **17** as described in **Installing the Guide Bar and Saw Chain** section.
3. Rotate the chain tension screw **19** using the flat screwdriver end of the wrench **24**. Turning the screw counterclockwise allows the guide bar **15** to be removed and reduces the tension on the chain so that it may be reced.
4. Wearing protective gloves, grasp the saw chain and lift the worn saw chain out of the groove in the guide bar.
5. Flip guide bar over every time you replace the chain to ensure even wear.
6. Place the new chain in the slot of the guide bar, making sure the saw teeth are facing the correct direction by matching the arrow and graphic of the saw chain on the sprocket cover **17** as shown in Fig. K, M.
7. Follow instructions for **Installing the Guide Bar and Saw Chain**.

Replacement chains and bars are available from your nearest authorized service center.

The DCMP5640 pole saw is compatible with the following DEWALT accessories when using the supplied .325 pitch,

7-tooth sprocket **42** (NA265339):

SAW CHAIN	GUIDE BAR
30cm NA291648	30cm NA373392

The DCMP5635 pole saw is also compatible with the following DEWALT accessories when using the 3/8" pitch, 6-tooth sprocket (90585879):

SAW CHAIN	GUIDE BAR
25cm NA565542	25cm NA734388

Attaching and Adjusting the Shoulder Strap (Fig. N, O)

▲ WARNING: *The shoulder strap should only be slung over one shoulder and not across the body. See Fig. O.*

A shoulder strap **26** is recommended for any tool with a total weight exceeding 13 lbs. (6 kg). (Total weight includes the tool, and battery.) Attach the strap **26** to the strap mount **25** as shown in Fig. N and adjust for proper balance and support

1. Attach the strap mount **25** to the insulated hand grip **12** by pinching the tabs on each side of the strap mount as shown in Fig. N. The strap mount **25** can be positioned anywhere along the insulated hand grip **12** to accommodate different sized users.
2. Snap the shoulder strap latch **45** onto the strap mount **25** located on the insulated hand grip **12**, as shown in Fig. N. Adjust the strap so it fits over your shoulder and provides proper balance and support.

Saw Chain and Guide Bar Oiling (Fig. J)

Auto Oiling System

The polesaw is equipped with an auto oiling system that keeps the saw chain and guide bar constantly lubricated.

1. The oil level indicator **21** shows the level of the oil in the oil reservoir. If the oil level is less than a quarter full, remove the battery and refill the oil reservoir with the correct type of oil.
2. Always empty oil reservoir when finished cutting.
3. Always empty oil reservoir before storing this unit.

NOTE: Do not operate the polesaw without oil.

NOTE: Always use a high-quality, biodegradable bar and chain oil for proper saw chain and bar lubrication. When pruning trees, vegetable-based bar and chain oil is recommended, as mineral-based oils may harm living trees. Never use dirty, used, or contaminated oil. Doing so may damage the tool.

Filling the Oil Reservoir

1. Unscrew counterclockwise and then remove the oil cap **22**. Fill the reservoir with the recommended bar and chain oil until the oil level has reached the top of the oil level indicator **21**.
 2. Refit the oil cap and tighten clockwise.
- NOTE:** Do not overtighten. There are alignment marks on the oil cap and tank. The cap only needs to be tightened until those marks align.
3. Periodically switch the saw off and check the oil level indicator **21** to ensure the bar and chain are being properly oiled.

Adjusting the Guide Bar Oil Flow (Fig. J)

This DCMP5635 and DCMP5640 are equipped with an adjustable oiling system. The flow of saw chain and guide bar lubrication can be set for different types of wood and cutting techniques. The saw chain and guide bar lubrication feed rate is suitable for most

applications when the oil flow adjust screw **46** is positioned in between the maximum **47** and minimum **48** positions.

To reduce the flow:

1. Using the screwdriver end of the wrench **24**, twist the oil flow adjust screw **46** clockwise towards the minimum **48** positions.

To increase the flow:

1. Using the screwdriver end of the wrench **24**, twist the oil flow adjust screw **46** counterclockwise maximum **47** position.

Adjusting the Telescoping Pole Length (Fig. A, P, Q) (DCMPS635, DCMPS640 Only)

▲ WARNING: Always check to make sure that the threaded sleeve is completely locked and that the telescoping pole does not move before using or transporting the pole saw. Not locking the threaded sleeve could result in the telescoping pole unexpectedly moving, creating a hazardous condition.

▲ WARNING: Periodically check the threaded sleeve to ensure that it is completely locked.

The telescoping pole **3** can be used retracted, extended, or at any position in between.

1. Unlock the threaded sleeve **13** by twisting it clockwise, as shown in Fig. P.

2. With one hand firmly grasping the telescoping assembly **49**, slide the telescoping pole **3** out with the other hand as shown in Fig. Q. This will reveal the stored telescoping pole **3**.

3. Once you have reached the desired telescoping length, lock the threaded sleeve **13** to secure the telescoping pole in place by twisting it counterclockwise.

4. Ensure the telescoping pole **3** is secured into position before use.

Transporting Pole Saw (Fig. R)

When transporting the pole saw always remove the battery pack **27** fully retract the telescoping pole **3** and cover the saw chain **16** with the scabbard **23** fully installed such that no chain is visible.

OPERATION

Instructions for Use

▲ WARNING: Always observe the safety instructions and applicable regulations.

▲ WARNING: To reduce the risk of serious personal injury, turn tool off and disconnect battery pack before making any adjustments or removing/installing attachments or accessories. An accidental start-up can cause injury.

Proper Hand Position (Fig. T)

▲ WARNING: To reduce the risk of serious personal injury, ALWAYS use proper hand position as shown.

▲ WARNING: To reduce the risk of serious personal injury, ALWAYS hold securely in anticipation of a sudden reaction. Proper hand position requires one hand on the main handle **7** and one hand on the insulated hand grip **12**.







NOTE: Always wear the shoulder strap **26** and have the strap buckle **45** connected to the strap mount **25** on the pole assembly **2**.

State of Charge Indicator (Fig. A, U) (DCMPS640 Only)

The DCMPS640 is equipped with a state of charge indicator. This will display the current level of charge in the battery during use. It does not indicate tool functionality and is subject to variation based on product components, temperature and end-user application.

- The state of charge indicator LEDs **9** will illuminate, indicating the percent of charge in the battery.
- When all four state of charge indicator LEDs **9** illuminate, the battery is fully charged.
- When one state of charge indicator LEDs **9** illuminates, charge is low and then it will flash when the battery is discharged. Remove the battery and charge it.

State of Charge Indicator LED Status

	LEVEL OF CHARGE	CHARGE INDICATOR LED COLOR
	100% - 75%	White
	50% - 75%	White
	20% - 50%	White
	≤20%	White
	Low battery shutdown	White and blinking.
	Battery too hot	All four, red and blinking.

Overloaded Battery Warning (Fig. A, U)

All four state of charge indicator LEDs **9** will illuminate red and then blink when the battery has reached a high temperature. To clear the overloaded battery warning, allow the battery to cool down then restart the saw and begin your cut again, this time with less force. Allow the saw to cut at its own pace.

Overload LED (Fig. A, U)

The DCMPS640 has an overload LED **10**. The overload LED **10** will illuminate amber and then blink when the motor or module is overloaded during operation. To clear the overload LED **10**, restart the appliance and begin cutting again, this time with less force. Allow the appliance to cut at its own pace.

The overload LED **10** will illuminate red and then blink when the module has reached a high temperature. To clear the overload LED **10**, allow the appliance to cool down then restart the appliance and begin cutting again, this time with less force. Allow the appliance to cut at its own pace.

On/Off Switch (Fig. V)

(DCMPS635 Only)

▲ CAUTION: Always wear safety glasses, head protection and hearing protection. Wear a filter mask if the operation is dusty. Use of gloves, long pants and substantial footwear is recommended. Keep long hair and loose clothing away from openings and moving parts.

▲ WARNING: Never attempt to lock the trigger in the on position.

NOTE: Always be sure of your footing and grip the pole saw firmly with both hands with the thumb and fingers encircling the handle **7**.

1. To turn the appliance on, push lock off lever **5** forward with your pointer finger and then squeeze the variable speed trigger switch **4** as shown in Fig. V. (Once the tool is running you can release the lock off lever.)
2. To turn the tool OFF, release the variable speed trigger switch **4**.

Switching On/Off (Fig. U, V) (DCMPS640 Only)

▲ WARNING: Grip tool firmly when switching on.

▲ CAUTION: Always wear safety glasses, head protection and hearing protection. Wear a filter mask if the operation is dusty. Use of gloves, long pants and substantial footwear is recommended. Keep long hair and loose clothing away from openings and moving parts.

▲ WARNING: Never attempt to lock the trigger in the on position.

NOTE: Always be sure of your footing and grip the pole saw firmly with both hands with the thumb and fingers encircling the handle **7**.

1. The speed control button/wake-up button **8** must be pressed before use to wake-up the appliance.

NOTE: If the operator presence lever **6** is released for more than five seconds the appliance will enter sleep mode.

2. To turn the appliance on, squeeze the operator presence lever **6** and then the variable speed trigger switch **4**.
3. To turn the appliance off, press and hold the speed control button/wake-up button **8** for at least two seconds.

Adjusting Motor Speed (Fig. U) (DCMPS640 Only)

The DCMPS640 is equipped with a speed indicator LED **11**. The speed indicator LEDs **11** will display the chosen power. There are two power settings, ECO mode **50** and standard mode **51**. The speed indicator LEDs **11** help you to optimize the appliance's performance and runtime needed for each job.

1. The speed control button/wake-up button **8** must be pressed before use to wake-up the appliance.

NOTE: The tool defaults to standard mode **51**.



2. Press the speed control button/wake-up button **8**, located on the appliance handle, until the speed indicator LED **11** is illuminated.

NOTE: Operate in ECO mode **50** for larger projects that require more runtime to complete.

3. Choose standard mode **51** as needed to cut through thicker limbs and for applications that need higher RPM.

NOTE: Runtime will be reduced.

Speed Setting LED Colors

	POWER SETTING	INDICATOR LED COLOR
	50 ECO Mode	White
	51 Standard Mode	Not Illuminated

Operating the Pole Saw (Fig. A)

▲ WARNING: Read and understand all instructions. Failure to follow all instructions listed below may result in electric shock, fire and/or serious personal injury.

▲ CAUTION: Always reduce the tension off the chain again after finishing work. The chain contracts as it cools down. If it is not slackened off, it can damage the pole saw.

IMPORTANT: Never operate a pole saw that is damaged or improperly adjusted or that is not completely and securely assembled. Be sure that the saw chain **16** stops moving when the trigger switch is released. Never adjust the guide bar **15** or saw chain when the motor is operating or the battery is attached.

Pole Saw Trimming/Pruning

▲ WARNINGS:

- **Never stand directly under the limb you are cutting.** Always position yourself out of the path of falling debris.
- **Always wear head, eye, foot and body protection.** Wearing body protection helps reduce the risk of injury when operating this unit.
- **Never stand on a ladder or other unstable support while using the pole saw.** Always avoid any position which can cause you to lose your balance and cause severe injury.
- **Keep other persons at least 50' (15 m) from the work area.** Distractions can cause you to lose control.
- **Electrocution Hazard.** To prevent shock, do not operate within 50' (15 m) of overhead electrical lines. Always check surrounding area for hidden electrical lines.
- **Do not hold pole saw switch handle above shoulder height.**

Branch Removal Hook (Fig. A)

▲ CAUTION: The branch removal hook is not a belt hook. Your pole saw includes a branch removal hook **20** for the intended purpose of helping to remove small to moderately sized pruned branches.

Pruning With the Pole Saw (Fig. A, T–W)

▲ WARNING: Let the tool work at its own pace. Do not overload.

▲ WARNING: When pruning trees: guard against kickback which can result in severe injury or death. See **Guard Against Kickback**, to avoid the risk of kickback. Do not overreach. Make sure your footing is firm. Keep feet apart. Divide your weight evenly on both feet.

1. Use both hands to grip pole saw as shown in Fig. T. Use a firm grip. Thumbs and fingers must wrap around the main handle **7** and the insulated hand grip **12**. Keep fingers away from sawdust exhaust chute **30** shown in Fig. W.
2. Never operate while in a tree, in any awkward position or on a ladder or other unstable surface. You may lose control of pole saw causing severe injury.
3. Follow directions below to trim a tree.
 - a. Make sure pole saw is running at full speed before making a cut. When starting a cut, place moving saw chain **16** against limb. Hold pole saw firmly in place to avoid possible bouncing or skating (sideways movement) of pole saw.
 - b. Guide pole saw using light pressure. Make first cut 6" (15 cm) from tree trunk on underside of limb. Use top of guide bar **15** to make this cut. Cut 1/3 through diameter of limb. Then make the finish cut from the top. If you try to cut off thick branches from

the bottom, the branch may close in and pinch the saw chain in the cut. If you try to cut off thick branches from the top, without a shallow undercut, the branch may splinter. Do not force pole saw. The motor will overload and may turn off. It will do the job better and safer at the rate for which it was intended.

c. Remove pole saw from cut while it is running at full speed. Stop pole saw by releasing trigger switch 4. Make sure saw chain has stopped before setting pole saw down.

MAINTENANCE

Your power tool has been designed to operate over a long period of time with a minimum of maintenance. Continuous satisfactory operation depends upon proper tool care and regular cleaning.

▲ WARNING: To reduce the risk of serious personal injury, turn tool off and disconnect battery pack before making any adjustments or removing/installing attachments or accessories. An accidental start-up can cause injury. The charger and battery pack are not serviceable.

Please refer to the back page of this manual for service centre contact information, or visit www.2helpU.com.

Regular maintenance ensures a long, effective life for the tool. After every 10 minutes of use be sure to remove the battery (be aware, the chain and bar can be hot!), check the bar and chain for correct tension, and lubricate per **Adjusting Chain Tension** and **Chain Oiling**.

Lubrication

Refer to **Auto Oiling System** described in the **Saw Chain and Guide Bar Oiling** section.

Cleaning

▲ WARNING: Electrical shock and mechanical hazard. Remove the battery before cleaning.

▲ WARNING: To ensure safe and efficient operation, always keep the electrical appliance and the ventilation slots clean.

▲ WARNING: Never use solvents or other harsh chemicals for cleaning the non-metallic parts of the tool. These chemicals may weaken the materials used in these parts. Use a cloth dampened only with water and mild soap. Never let any liquid get inside the tool; never immerse any part of the tool into a liquid.

Ventilation slots can be cleaned using a dry, soft non-metallic brush and/or a suitable vacuum cleaner. Do not use water or any cleaning solutions. Wear approved eye protection and an approved dust mask.

Motor Vent Screens (Fig. X, Y)

To get the best possible performance from your pole saw it is important to keep the motor vent screens 53 clean.

- Using a torx bit or flathead screwdriver, remove the screws 54 and lift the vent screens away from the motor housing.
- Rinse out the motor vent screens 53 with warm soapy water.
- Ensure the motor vent screens 53 are completely dry before refitting into the motor housing.
- Install and tighten the screws 54 to secure the motor vent screens 53 to the motor housing.

Optional Accessories

▲ WARNING: Since accessories, other than those offered by DEWALT, have not been tested with this product, use of such accessories with this tool could be hazardous. To reduce the risk of injury, only DEWALT-recommended accessories should be used with this product.

Consult your dealer for further information on the appropriate accessories.

Saw Chain and Guide Bar

After every few hours of use, remove the sprocket cover, guide bar and chain and clean thoroughly using a soft bristle brush. Ensure oiling hole on bar is clear of debris. When replacing dull chains with sharp chains it is good practice to flip the guide bar from bottom to top.

Sprocket and Sprocket Cover (Fig. A, H, I)

▲ CAUTION: Sharp chain. Always wear protective gloves when handling the chain. The chain is sharp and can cut you when it is not running.

▲ WARNING: Sharp moving chain. To prevent accidental operation, ensure the battery is removed from the tool before performing the following operations. Failure to do this could result in serious personal injury.

- Place the saw on a flat, firm surface.
- Remove sprocket cover 17 as described in **Installing the Guide Bar and Saw Chain** section.
- Wearing protective gloves, use a clean, soft bristle brush to wipe away any saw dust, sticks, vines or other debris that may have collected inside the sprocket cover 17 and around the saw chain 16 or sprocket 42.
- Rotate the chain tension screw 19 using the flat screwdriver end of the wrench 24. Turning the screw counterclockwise allows the guide bar 15 to recede and reduces the tension on the chain so that it may be removed.
- Wearing protective gloves, grasp the saw chain and guide bar and lift them away from the tool.
- Wearing protective gloves, use a clean, soft bristle brush to wipe away any saw dust or other debris that may have collected on the guide bar 15 and around the saw chain 16.
- Install the chain, guide bar and sprocket cover 17 as described in **Installing the Guide Bar and Saw Chain, Replacing the Saw Chain** sections and adjust chain tension properly before use as described in the **Adjusting Chain Tension** section.

Saw Chain Sharpening (Fig. Z–BB)

▲ CAUTION: Sharp chain. Always wear protective gloves when handling the chain. The chain is sharp and can cut you when it is not running.

▲ WARNING: Sharp moving chain. To prevent accidental operation, ensure that battery is removed from the tool before performing the following operations. Failure to do this could result in serious personal injury.

▲ WARNING: Do not over file chain rakers 56, this will increase the risk of kickback. If the chain 16 has been sharpened more than four times, replace it.

Each time the chain 16 is sharpened, it loses some of the low kickback qualities and extra caution should be used.

It is recommended that a saw chain be sharpened no more than four times.

NOTE: The cutters 59 will dull immediately if they touch the ground/dirt or a nail while cutting.

To get the best possible performance from your pole saw it is important to keep the cutters 59 of the saw chain sharp. Follow these helpful tips for proper saw chain sharpening:

1. For best results use a 5/16" (4 mm) file and a file holder or filing guide to sharpen your saw chain. This will ensure you always get the correct sharpening angles.
2. Place the file holder flat on the top plate **55** and depth gauge of the cutter **59**.
3. Keep the correct top plate **55** filing angle line of 30 ° **57** on your file guide parallel with your chain (file at 60 ° from chain viewed from the side) as shown in Fig. Z.
4. Sharpen cutters **59** on one side of the chain **16** first. File from the inside of each cutter to the outside. Then turn your saw around and repeat the processes (2, 3, 4) for cutters on the other side of the chain.

NOTE: Use a flat file to file the tops of the rakers **58** (portion of chain link in front of the cutter **59**) so they are about .025" (635 mm) below the tips of the cutters as shown in Fig. AA.

5. Keep all cutter lengths equal as shown in Fig. BB.
6. If damage is present on the chrome surface of the top plates **55** or side plates **60**, file back until such damage is removed.

▲ CAUTION: After filing, the cutter will be sharp, use extra caution during this process.

Protecting the Environment



Separate collection. Products and batteries marked with this symbol must not be disposed of with normal household waste.

Products and batteries contain materials that can be recovered or recycled reducing the demand for raw materials. Please recycle electrical products and batteries according to local provisions. Further information is available at www.2helpU.com.

Rechargeable Battery Pack

This long life battery pack must be recharged when it fails to produce sufficient power on jobs which were easily done before. At the end of its technical life, discard it with due care for our environment:


- Run the battery pack down completely, then remove it from the tool.
- Li-Ion cells are recyclable. Take them to your dealer or a local recycling station. The collected battery packs will be recycled or disposed of properly.

After Service and Repair

DEWALT service centers are staffed with trained personnel to provide customers with efficient and reliable product service. We do not take any responsibility when you have repaired in unauthorized service center. You can refer to the leaflet of CONTACT CENTER LOCATOR in product package and contact us through hotline, website or social media to find the nearest DEWALT service center around you.

60V锂电高枝锯

DCMPS635, DCMPS640

 **警告:** 请阅读本手册中的所有安全警告、说明、插图和规格, 包括原始工具手册或单独的电池和充电器手册中的电池和充电器部分内容。如需手册, 请联系客户服务部 (详情请参见本手册背面)。



技术数据

		DCMPS635	DCMPS640
电压	V _{DC}	54 (最大60)	54 (最大60)
电池类型		锂离子	锂离子
导板长度	cm	25	30
最大链速 (空载)	m/s	15.6	21.3
最大切割长度	cm	20	25
油壶容量	ml	95	95
重量 (不含电池包)	kg	6.9	7.3



警告: 为降低伤害风险, 请阅读使用手册。

定义: 安全指南

下列定义描述了各标志术语的严重程度。请仔细阅读本手册, 并注意这些标志。

▲ 危险: 表示存在紧急危险情况, 如果不加以避免, 将导致死亡或重伤。

▲ 警告: 表示存在潜在的危險情况, 如果不加以避免, 可能导致死亡或严重伤害。

▲ 小心: 表示存在潜在危險情况, 如果不加以避免, 可能导致轻度或中度伤害。

注意: 表示存在不涉及人身伤害的情况, 如果不加以避免, 可能导致财产损失。

▲ 表示存在触电风险。

▲ 表示存在火灾风险。

电动工具通用安全警告

▲ 警告: 请阅读本电动工具随附的所有安全警告、说明、图示和规定。未能遵照以下所列说明会导致电击、火灾和/或严重伤害。

保存所有警告和说明书以备查阅。

警告中的术语“电动工具”指市电驱动 (有线) 电动工具或电池驱动 (无线) 电动工具。

1) 工作场地的安全

- 保持工作场地清洁和明亮。杂乱和黑暗的场地会引发事故。
- 请勿在易爆环境, 如有易燃液体、气体或粉尘的环境下操作电动工具。电动工具产生的火花会点燃粉尘或气体。
- 操作电动工具时, 远离儿童和旁观者。注意力不集中会使你失去对工具的控制。

2) 电气安全

- 电动工具插头必须与插座相配。绝不能以任何方式改装插头。需接地的电动工具不能使用任何转换插头。未经改装的插头和相配的插座将降低电击风险。
- 避免人体接触接地表面, 如管道、散热片和冰箱。如果你身体接触接地表面会增加电击风险。
- 不得将电动工具暴露在雨中或潮湿环境中。水进入电动工具将增加电击风险。
- 不得滥用电源线。绝不能用软线搬运、拉动电动工具或拔出其插头。使软线远离热源、油、锐边或运动部件。受损或缠绕的软线会增加电击风险。
- 当在户外使用电动工具时, 使用适合户外使用的延长线。适合户外使用的电线将降低电击风险。
- 如果无法避免在潮湿环境中操作电动工具, 应使用带有剩余电流装置 (RCD) 保护的电源。RCD的使用可降低电击风险。

3) 人身安全

- 保持警觉, 当操作电动工具时关注所从事的操作并保持清醒。当你感到疲倦, 或在有药物、酒精或治疗反应时, 不要操作电动工具。在操作电动工具时瞬间的疏忽会导致严重人身伤害。
- 使用个人防护设备。始终佩戴护目装备。防护装置, 诸如适当条件下使用防尘面具、防滑安全鞋、安全帽、听力防护等装置能减少人身伤害。
- 防止意外起动。在连接电源和/或电池包、拿起或搬运工具前, 应确保开关处于关断位置。手指放在开关上搬运工具或开关处于接通时通电会导致危险。
- 在电动工具接通之前, 拿掉所有调节钥匙或扳手。遗留在电动工具旋转零件上的扳手或钥匙会导致人身伤害。

- e) 手不要过分伸展。时刻注意立足点和身体平衡。这样能在意外情况下能更好地控制住电动工具。
- f) 着装适当。不要穿宽松衣服或佩戴饰品。让你的头发和衣服远离运动部件。宽松衣服、配饰或长发可能会卷入运动部件。
- g) 如果提供了与排屑、集尘设备连接用的装置，要确保其连接完好且使用得当。使用集尘装置可降低尘屑引起的危险。
- h) 不要因为频繁使用工具而产生的熟悉感而掉以轻心，忽视工具的安全准则。某个粗心的动作可能在瞬间导致严重的伤害。

4) 电动工具使用和注意事项

- a) 不要勉强使用电动工具，根据用途使用合适的电动工具。选用合适的按照额定值设计的电动工具会使你工作更有效、更安全。
- b) 如果开关不能接通或关断电源，则不能使用该电动工具。不能通过开关来控制的电动工具是危险的且必须进行修理。
- c) 在进行任何调节、更换附件或贮存电动工具之前，必须从电源上拔掉插头和/或卸下电池包（如可拆卸）。这种防护性的安全措施降低了电动工具意外起动的风险。
- d) 将闲置不用的电动工具贮存在儿童所及范围之外，并且不允许不熟悉电动工具和不了解这些说明的人操作电动工具。电动工具在未经培训的使用者手中是危险的。
- e) 维护电动工具及其附件。检查运动部件是否调整到位或卡住，检查零件破损情况和影响电动工具运行的其他状况。如有损坏，应在使用前修理好电动工具。许多事故是由维护不良的电动工具引发的。
- f) 保持切削刀具锋利和清洁。维护良好地有锋利切削刃的刀具不易卡住而且容易控制。
- g) 按照使用说明书，并考虑作业条件和要进行的作业来选择电动工具、附件和工具的刀头等。将电动工具用于那些与其用途不符的操作可能会导致危险情况。
- h) 保持手柄和握持表面干燥、清洁，不得沾有油脂。在意外的情况下，湿滑的手柄不能保证握持的安全和对工具的控制。

5) 电池式工具使用和注意事项

- a) 仅使用生产者规定的充电器充电。将适用于某种电池包的充电器用到其他电池包时可能会发生着火危险。
- b) 仅使用配有专用电池包的电动工具。使用其他电池包可能会产生伤害和着火危险。
- c) 当电池包不用时，将其远离其他金属物体，例如回形针、硬币、钥匙、钉子、螺钉或其他小金属物体，以防电池包一端与另一端连接。电池组端部短路可能会引起燃烧或着火。

- d) 在滥用条件下，液体可能会从电池组中溅出，应避免接触。如果意外碰到液体，用水冲洗。如果液体碰到了眼睛，还应寻求医疗帮助。从电池中溅出的液体可能会发生腐蚀或燃烧。

- e) 不要使用损坏或改装过的电池包或工具。损坏或改装过的电池组可能呈现无法预测的结果，导致着火、爆炸或伤害。
- f) 不要将电池包暴露于火或高温中。电池包暴露于火或高于130°C的高温中可能导致爆炸。

6) 维修

- a) 让专业维修人员使用相同的备件维修电动工具。这将保证所维修的电动工具的安全。
- b) 决不能维修损坏的电池包。电池包仅能由生产者或其授权的维修服务商进行维修。

高枝锯安全警告：

- a) 高枝锯运转时，身体的所有部位必须远离锯链或锯片。启动高枝锯前，务必确保锯链或锯片未触碰任何物体。操作高枝锯时稍有不慎，可能导致人员受伤。
- b) 操作时务必双手紧握高枝锯。双手握持高枝锯进行修剪，以防机器失控。
- c) 为降低触电风险，切勿在电力线路附近使用高枝锯。接触或靠近电线电路可能导致严重伤害或触电致死。
- d) 操作时应仅握住高枝锯的绝缘握持部位，因为锯链或锯片可能触及隐蔽电线或其自身电源线。锯链或锯片接触带电导线时，可能使高枝锯的裸露金属部件带电，从而导致操作者触电。
- e) 佩戴护目和护耳装备。建议另外穿戴手部护具和防滑鞋。穿戴适当的防护装备可降低人身伤害风险。
- f) 在高空操作高枝锯时，务必始终佩戴头部防护装备。坠落的锯屑可能导致严重人身伤害。
- g) 请始终保持稳固的站立姿势，仅在站立于地面时操作高枝锯。站在滑动或不稳定的表面上时，可能会因身体失去平衡导致机器失控。
- h) 请勿在树上、梯子或任何不稳固的支撑物上操作高枝锯。以这种方式操作高枝锯可能导致身体失去平衡，导致机器失控及引发人身伤害。
- i) 所有电源线及电缆应远离切割区域。电源线或电缆可能隐藏在树丛中，可能被锯链或锯片意外切断。
- j) 请勿在恶劣天气条件，尤其是在有雷击危险的情况下使用高枝锯。这样可降低被闪电电击中的风险。
- k) 切割受张力作用的树枝时，必须警惕回弹危险。当木材纤维中的张力释放时，弹簧驱动的锯臂可能击打到操作者，并/或使高枝锯失控弹飞。
- l) 切割灌木和树苗时要特别小心。细长物料可能卡住锯链或锯片，导致其朝操作者的方向甩动或使操作者失去平衡。
- m) 如握持高枝锯时将其关闭，请务必小心，切勿使其触碰任何电源开关，并使锯链或锯片远离身体。正确握持高枝锯可降低意外触碰锯链或锯片的风险。

- n) 运输或存放高枝锯时, 务必安装导板或锯片护罩。正确操作高枝锯可降低意外触及运转中的锯链或锯片的可能性。
- o) 清除卡料或维修高枝锯时, 务必关闭所有电源开关并断开电池包。清除卡料或进行维护时, 若高枝锯意外启动, 可能导致严重人身伤害。
- p) 仅用于切割木材。请勿将高枝锯用于非指定用途。例如: 切勿使用高枝锯切割塑料、金属、砖石或非木质建筑材料。使用高枝锯进行非指定用途的操作可能导致危险情况。

重要安全须知

▲ 警告: 使用电动园艺设备时, 必须始终遵循基本安全预防措施, 以降低火灾、触电和人身伤害风险, 具体注意事项如下。

▲ 警告: 为降低人身伤害风险:

- 在使用本工具前, 请确保所有操作相关人员均已阅读并理解本手册中的所有安全须知及其他相关信息。
- 请妥善保管本说明书并定期查阅。

1. 避免在危险环境中使用——请勿在潮湿或淋水场所操作电器设备。请勿在易燃易爆气体环境下操作便携式电器设备。此类设备中的电机运行时会产生火花, 而火花可能引燃气体。
2. 请勿在雨天使用本工具。
3. 所有旁观者请远离——与工作区域保持安全距离, 尤其是儿童。
4. 着装规范——请勿穿着宽松衣物或佩戴首饰。它们可能会被卷入运动部件中。建议在户外作业时戴橡胶手套并穿着结实的工装鞋。请佩戴防护发网, 确保长发完全包裹。
5. 始终佩戴护目装备——安装电池时须全程使用经认证的护目装备。同时需佩戴防护面罩或防尘口罩以及听力保护装备。安全眼镜和听力防护装备可在您当地的得伟 (DeWALT) 服务中心或授权维修点额外付费购买。
6. 正确使用设备——请勿将设备用于非指定用途之外的任何作业。
7. 防止意外启动——安装电池时, 手指勿置于触发开关上。
8. 拿起或握持设备时, 切勿抓握裸露的锯片或切削刃。
9. 切勿强行操作设备——按设计速率操作可提升工作效率并降低受伤风险。
10. 请勿过度伸出杆体——时刻注意脚下和身体平衡。
11. 保持警觉, 当操作电动工具时关注所从事的操作并保持清醒。当你感到疲倦, 或在有药物、酒精或治疗反应时, 请勿操作电动工具。在操作电动工具时瞬间的疏忽会导致严重人身伤害。
12. 防止意外启动。在连接电源和/或电池包、拿起或搬运工具前, 应确保开关处于关断位置。手指放在开关上搬运工具或开关处于接通时通电会导致危险。

13. 断开设备电源——设备闲置、进行维护或更换锯片等配件时, 请取出电池。
14. 闲置设备应存放于室内——设备不使用时, 应存放在室内干燥、高处或上锁处, 避免儿童接触。
15. 设备保养——保持切削刃锋利清洁, 以保证工具的最佳性能并降低受伤风险。请遵循润滑及更换配件的相关操作说明。定期检查设备电源, 如有损坏, 请在授权维修机构进行修理。保持手柄干燥、清洁且无油脂。
16. 检查受损部件——在继续使用设备前, 应仔细检查防护装置或其他部件是否受损, 确保其能正常运转并实现预期功能。检查运动部件的对中情况、部件是否卡滞、零件有无断裂、安装状态以及其他可能影响设备运行的条件。若护罩或其他部件出现损坏, 应送至授权维修中心进行专业修复或更换 (本手册另有说明的情况除外)。
17. 设备损坏——若设备遭受撞击或与异物缠绕, 请立即停止运行、取出电池, 检查损坏情况并在继续操作前修复所有损伤。
18. 请勿将设备浸入水中或用水管冲洗。请勿使任何液体进入设备内部。若设备不慎受潮, 请静置晾干至少48小时。
19. 请勿将设备存放于肥料或化学品上或附近。

请妥善保管本说明

▲ 警告——请勿在电力线路附近使用此工具。 本设备不具备在接触架空电线时提供防触电保护的功能。使用高枝锯前, 请查阅当地关于架空电力线路安全距离的规定, 并确保作业位置安全可靠。

- 请勿使身体任何部位靠近锯链。当锯片移动时, 请勿移走或握住待切割的材料。清除卡料时, 确保开关处于关闭状态。机器关闭后锯片将持续运行一段时间。操作高枝锯时稍有不慎就可能导致严重的人身伤害。
- 拿起高枝锯时请握住手柄, 并确保锯链已停止运转。运输或存放高枝锯时, 务必取下电池并安装锯链护套。正确操作高枝锯可降低锯链可能造成的人身伤害风险。
- 应仅通过绝缘的抓握面握住高枝锯, 因为锯片可能会接触到隐蔽的电线。高枝锯接触到“带电”的电线可能会使锯链的裸露金属部分“带电”, 并导致操作者触电。
- 请勿在恶劣天气条件, 尤其是在有雷击危险的情况下使用高枝锯。这样可降低被闪电击中的风险。
- 为降低触电风险, 切勿在电力线路附近使用高枝锯。接触或靠近电线电路可能导致严重伤害或触电致死。
- 操作时务必双手持握高枝锯。双手紧握高枝锯, 以防机器失控。
- 在高处操作高枝锯时, 务必始终佩戴头部防护装备。坠落的锯屑可能导致严重人身伤害。
- 维修、清洁或清理园艺设备内的物料前, 请移除或断开电池。

· 请勿因为频繁使用工具而产生的熟悉感而掉以轻心，忽视工具的安全准则。某个粗心的动作可能在瞬间导致严重的伤害。

专用安全操作规范

高枝锯操作前的注意事项

· 为确保安全操作，使用高枝锯前请仔细阅读并理解所有说明内容。请遵循所有安全须知。未遵守以下列出的所有安全须知，可能导致严重人身伤害。

· 密切关注正在进行的作业。遵守基本安全准则。疲劳时请勿操作高枝锯。

· 高枝锯仅用于修剪树枝。请勿将高枝锯用于非指定用途。请勿用于切割其他物品。

· 只有经过专业指导的成年人方可操作高枝锯。严禁儿童操作。

· 请勿让儿童或未经培训人员操作本设备。

· 操作高枝锯时请佩戴以下安全装备：

- 耐用型作业手套
- 防滑钢头安全鞋
- 安全眼镜、护目镜或面罩
- 安全帽

- 耳罩或耳塞
- 面罩或防尘口罩（如工作环境多尘）

· 穿着耐磨长裤和高帮防护靴。请勿穿着宽松衣物、短裤，佩戴任何首饰或赤脚操作。

· 将长发束起固定，以防卷入任何运动部件中。

· 切割前，务必确保具备以下条件：

- 清理工作区域
- 立足点安全稳固
- 坠枝时的应急撤离路径

· 修剪前检查树木。确保树枝能无阻挡地落到地面。

· 请勿使用高枝锯砍伐幼树。

操作高枝锯时

▲ 危险：为降低触电风险，请勿在潮湿表面使用本工具。请勿在雨天使用。在室内存放。

▲ 危险：防止意外启动——安装电池后，手指勿置于触发开关上。安装电池时请确保开关处于关闭状态。

· 仅通过指定的抓握面握住工具：主手柄和杆体。

· 保持警觉。操作设备时请遵守基本安全准则。

· 保持工作区域整洁。杂乱区域易引发伤害。

· 切割作业完成后或无人看管时，务必从高枝锯上取下电池。

· 请确保儿童、动物及旁观者与高枝锯保持至少15米（50英尺）的安全距离。应仅高枝锯操作者可进入作业区域。

· 请勿使用高枝锯砍伐树木。

· 拿起或握持高枝锯时，请勿抓握外露的锯链。

· 准备好进行切割作业前，手指勿触碰触发开关。

· 启动高枝锯前，请确保锯链未接触任何物体。

· 锯链运转时，请保持身体各部位远离锯链。

· 切割时勿强行操作高枝锯。轻压即可。该设备在额定工况下的作业效能与安全性更佳。

· 携带高枝锯至不同地点时，应确保：

- 电池已取出

- 手指远离触发开关

- 握住杆体平衡点进行操作

- 锯链和导板朝后，并装有护套。

· 请勿使用高枝锯砍伐小灌木和幼树。细长物料可能卷入锯链并甩向操作者。并可能导致操作者失去平衡。

· 请勿在光线较暗的环境下操作本工具。

· 注意脚下和身体平衡。请勿过度伸出杆体。过度伸出杆体可能导致失去平衡。

· 身体任何部位均需远离运动部件。

· 任何情况下均不得使用本产品未随附的附件或配件，或本说明书中未标明适用于本产品的附件或配件。

· 每次使用前以及坠落或受到其他撞击后，请检查高枝锯的状况。确保无严重缺陷或损坏。

发生以下情形时请勿操作高枝锯：

- 受到酒精、药物或毒品的影响。

- 雨天或潮湿、湿润区域。

- 存在高度易燃液体或气体的场所。

- 高枝锯损坏后修理不当或未完全牢固组装好。

- 按下触发开关无法开启或关闭高枝锯。松开触发开关时，锯链必须立即停止运转。请在授权维修中心更换故障的开关。参见维护章节中的配件部分。

- 匆忙时。

- 在树上或梯子上时。

- 在平台上时。

- 大风或暴风雨天气期间。

- 除非经过专门培训并严格遵循培训资料指导，否则切勿在吊篮或伸缩悬臂作业平台上使用本工具。请严格遵守所用吊篮或伸缩悬臂作业平台的所有相关操作说明及安全警告。未经专业培训进行高空作业，可能增加人员伤亡风险。作业前确认安全防护装置已有效固定。不使用时请始终安装护套。请勿过度伸出杆体。仅将延长杆伸出所需长度。请勿在电力线路附近使用此工具。

通用安全操作规范

▲ 危险：触电危险。接触电源线可导致重伤或死亡。切勿在任何电源、电线或电力线路附近使用本工具。

▲ 警告：为确保安全操作，请仔细阅读并理解本使用手册。佩戴面罩（及/或安全眼镜）和安全帽以防坠物伤害。始终保持工作区域和撤退路径的畅通，注意肢体/树枝位置，以防坠物和锯屑伤人。操作高枝锯时，请与旁观者保持15米（50英尺）的安全距离。为降低触电风险，请勿在潮湿表面使用本工具。请勿在雨天使用。在室内存放。

▲ 警告:本产品(不含电池包或充电器)在正常及合理可预见的使用条件下,具备一定程度的防尘(有限侵入)和防液体(轻微泼溅)保护能力。电池包和充电器本身不具备防护等级(IP等级)。切勿将产品、电池或充电器浸入液体中。

· 为防止被掉落的树枝砸伤,请勿站在待切割的树枝或枝干正下方。本设备与地面夹角不得超过60°。

· 保持手柄干燥、清洁且无油渍。

· 启动设备前,请确保锯链未接触任何物体。

· 放下设备前,务必确保锯链已完全停止运转。

维修

· 工具维护必须由具备资质的专业维修人员执行。未经专业培训人员擅自进行**维护**或**维修**可能导致伤害风险。请参阅本手册的维护章节。

· 维修工具时,请仅使用同型号替换零件。请遵循本手册维护章节中的操作说明。使用未经授权的零部件或未遵循**维护**说明可能导致触电或受伤。

防反弹护罩

▲ 警告:当导板鼻端或尖端接触到物体时,或者当木材切口合拢并在切割过程中夹住锯链时,可能会发生反弹。锯尖触料时可能引发急速的反向冲击,导致导板猛然向上回弹,朝操作者方向冲击。若锯链在导板上部被卡阻,可能导致导板急速回弹,朝操作者方向冲击。上述任一反应均可能导致高枝锯失控,从而造成操作者严重受伤。

▲ 为最大限度防反弹风险,请遵循以下注意事项:

· 运行时,请用双手紧握设备。用拇指和其他手指牢牢握住主杆手柄和绝缘握把,确保完全包裹。请勿将杆体当作抓握面。

· 请勿过度伸出杆体。

· 时刻注意脚下和身体平衡。

· 请勿使导板鼻端接触到原木、树枝、地面或其他障碍物。

· 请勿将高枝锯手柄高举过肩。

· 使用防反弹锯链、链锯制动系统及专用导板等装置,以降防反弹相关风险。

· 仅使用制造商指定的替换导板和锯链或同等产品。

· 请勿使运行中的锯链接触到导板尖端的任何物体。

· 保持作业区域无障碍物,包括其他树木、树枝、岩石、围栏、树桩等。在切割原木或树枝时,必须清除或避开所有可能触及锯链的障碍物。

· 确保您的锯链锋利并适当张紧。锯链松动或钝化后,反弹的风险会增加。定期在电机停止且电池移除的状态下检查锯链张力。

· 锯链全速运转后,方可开始和继续切割。如果锯链移动的速度较慢,发生反弹的可能性就会较大。

· 一次仅切割一根枝条。

· 重新切割同一根木头时要特别小心。将防反弹钉稳固嵌入木材,待锯链达到全速运转后再开始切割。

· 请勿尝试插切或钻切操作。

· 注意移位的树枝或其他外力可能导致切口闭合,造成锯链夹持或坠物冲击风险。

防反弹安全功能

▲ 警告:您购买的高枝锯具有以下降低反弹风险的安全装置;但这些装置并不能完全消除此类风险。用户使用高枝锯时,不能只依赖安全装置。您必须遵循本手册中的所有安全预防措施、说明和维护建议,从而尽可能规避可能导致严重伤害的反弹和其他冲击。

· **防反弹导板**采用小半径端头设计,可显著缩小导板尖端反弹危险区域范围。按照电动链锯的安全要求进行测试的结果显示:防反弹导板的设计可以大大减少反弹的次数和幅度。

· **防反弹锯链**采用锯床挡板与防护链节设计,可偏转反弹力并使木材平缓导入切削齿。防反弹锯链指经代表性链锯机型测试后,其反弹性能指标符合安全要求的锯链产品。

高枝锯相关名称与术语

· **驱动链轮或链轮**——驱动锯链的齿状部件。

· **导板**——导轨式实心支撑结构,用于承托和引导锯链运行。

· **导板护套**——工具闲置时用于保护导板的护罩,可防止齿面接触。

· **反弹现象**——指当锯链在导板顶端区域(导板鼻部)接触木材、树枝等物体,或切削过程中木材闭合夹住锯链时,导致导板突然向上或向后运动的现象。

· **防反弹锯链**——符合防反弹性能要求的锯链。(对代表性链锯样本进行测试)

· **防反弹导板**——一种经过证明,可以显著防反弹的导板。

· **替换锯链**——经特定高枝锯测试符合反弹性能要求的锯链。与其他锯具搭配使用时可能无法达到性能要求。

· **锯链**——由动力机构驱动、依托导板支撑的闭环链条结构,其切割齿负责木材切削作业。

· **防反弹钉(定位齿)**——修剪作业时用于支点定位的尖齿结构,可在锯切过程中提供旋转枢轴和位置保持功能。

· **开关**——按下后能连通或断开高枝锯机电源电路的装置。

· **开关锁**——可动式闭锁装置,需手动触发方可解除锁止状态的机械屏障,用于防止开关意外启动。

· **修枝(修剪)**——将树木枝条切除的工序。

· **底切**——从原木或树枝下方向上进行的切割。此操作需在正常切割位置进行,且使用导板顶部实施切割。

存放

1. **在室内存放。**最佳存放地点应阴凉干燥，避免阳光直射、过热或过冷，并置于儿童无法触及之处。
2. **工作结束后，务必再次释放锯链张力。**锯链冷却时会收缩。如不释放张力，可能会损坏工具。

剩余风险

尽管遵守了相关的安全法规并采用了安全装备，某些剩余风险仍然是无法避免的。此类风险包括：

- 听力损伤。
- 飞溅颗粒造成的人身伤害风险。
- 使用时配件发热导致的灼伤风险。
- 长时间使用引起的人身伤害风险。

请妥善保管本说明

电池类型

有关详细信息，请参阅电池/充电器手册。

包装内的物品

DCMPS635、DCMPS640包装内含：

- 1个 高枝锯
- 1个 导板罩
- 1个 肩带
- 1个 4.0毫米圆锉
- 1个 T20扳手
- 1个 绑带底座
- 1个 扳手
- 1本 使用手册

注意：N型号不附送电池包、充电器和工具箱。NT型号不附送电池包和充电器。检查工具、部件或配件是否在运输过程中损坏。

- 操作前，请仔细阅读并理解本手册内容。

工具上的标记

工具上印有下列图形：



使用前请阅读使用手册。



请佩戴护目装备。



请佩戴护耳装备。



请勿在雨天使用本工具。



请佩戴头部保护装备。



请穿戴防护手套。



切割危险。勿将手伸进槽口。



请穿戴防护鞋。



锯链的旋转方向。



触电危险。与架空线路保持至少10米距离。



关闭工具。在对工具进行任何维护之前，请将电池从工具中取出。



使旁观者远离工具。

日期码位置(图G)

日期码 **61** 由4位数的年份和2位数的周数组成，后跟2位数的工厂代码。

说明(图A)

▲ 警告：切勿改装本电动工具或其任何部件，否则，可能导致损坏或人身伤害。

- 1 动力机头
- 2 杆体组件
- 3 伸缩杆
- 4 触发开关
- 5 锁定杆 (DCMPS635)
- 6 操作杆
- 7 主手柄
- 8 速度控制按钮/唤醒按钮
- 9 电池充电状态指示灯
- 10 过载指示灯LED
- 11 速度指示灯
- 12 绝缘手柄
- 13 螺纹套筒
- 14 锯头
- 15 导板
- 16 锯链
- 17 链轮护罩
- 18 导板锁紧螺母
- 19 锯链张紧螺丝
- 20 除枝钩
- 21 油位指示器
- 22 油盖
- 23 护套
- 24 扳手
- 25 绑带底座

- 26 肩带
- 27 电池包¹
- 28 电池释放按钮
- 29 4毫米圆锉
- 30 T20扳手

¹部分型号附送。

注意:检查工具、部件或配件是否在运输过程中损坏。

指定用途

DCMP5635、DCMP5640专为专业及家用园林修剪作业而设计。DCMP5635设计用于修剪和切割直径达20厘米(8英寸)树枝。DCMP5640设计用于修剪和切割直径不超过25厘米(10英寸)树枝。请勿在树上、梯子或任何不稳固的支撑物上操作高枝锯,必须始终双手持握作业。

请勿在潮湿环境、狂风暴雨天气或在存在易燃液体或气体的环境中使用本工具。

请勿在黑暗或多雾的环境下使用。本工具要在充足的光线下使用。

本高枝锯属于专业级电动工具。

请勿让儿童接触本工具。

- **儿童和体弱者。**儿童或体弱者不适宜使用本产品。
- 本产品不适合体力、感官或智力不足以及缺乏经验、知识或技能的人员(包括儿童)使用。不得在无人监管的情况下让儿童接触本产品。

组装与调整

▲ 警告:为降低严重的人身伤害风险,在进行任何调整或取出/安装附件或配件之前,请关闭工具并断开电池包连接。意外启动工具可能会造成伤害。

▲ 警告:仅使用DEWALT电池和充电器。

插入或取出工具上的电池包(图S)

注意:确保您的电池包27已经充满电。

要将电池包安装到工具手柄中

1. 将电池包对准工具手柄内的轨道(图S)。
2. 将电池包滑入手柄内,使其牢牢地固定在工具内,并确保您听到其锁定到位的声音。

从工具中取出电池包

1. 按下电池释放按钮28,将电池包从工具握柄中稳妥地拉出。
2. 将电池包插入充电器。

工具组件(图B-F)

▲ 警告:为降低严重人身伤害的风险,请先关闭工具并拆除电池包,然后再进行任何调节或拆除/安装配件或附件。意外启动工具可能会造成伤害。

高枝锯由三个部件组成:动力机头1、杆体组件2、锯头14。请按照以下步骤组装工具。

将动力机头安装至杆体组件(图C-E)

1. 拧松动力机头输入端32底部的螺丝31,并卸下动力机头输入端32中部的螺丝33,使动力机头1能滑入杆体组件2的底部。
2. 将动力机头1完全滑入杆体组件2底部,如图C-E所示。
3. 将螺丝33安装在动力机头输入轴32中央,并与杆体组件2底部的小孔34对齐。拧紧螺丝31和33。请勿过度拧紧。

将锯头安装至杆体组件(图F)

1. 找到并拧松锯头14上的三颗螺丝35(如图F所示)。将螺丝充分拧松,使锯头14能够滑入杆体组件2的顶部。
2. 将锯头14滑入杆体组件2的顶部。请确保将销钉36与杆体组件2顶部末端的槽口37对齐,以保证锯头14的正确定位,如图F所示。
3. 锯头必须插入到杆体组件2上,直至抵达杆体组件2上的线形图标38处。
4. 拧紧三颗螺丝35。请勿过度拧紧。

扳手存放处(图G)

扳手24存放于脚架41上的固定卡扣39中。

1. 向上抬起扳手24末端,使其脱离固定卡扣39即可取下。
2. 使用完毕后,请将扳手放回固定卡扣39内。首先将扳手的平头螺丝刀端安装到固定槽40中,然后向下按压扳手端,直到固定卡扣39将扳手24牢牢固定到位。

安装导板和锯链(图A,H-M)

▲ 小心:锯链很锋利。处理锯链时一定要戴上防护手套。锯链很锋利,静止状态下也可能会割伤您。

▲ 警告:运行中的锯链很锋利。为防止工具意外运行,在进行以下操作前,请确保电池已从工具中取出。否则可能导致严重的人身伤害。

如果锯链16和导板15在纸箱中分开包装,则必须将锯链连接到导板上,并且两者都必须连接到工具的主体上。

1. 将锯放在平坦、坚固的表面上。
2. 用随附扳手24逆时针旋转导板锁紧螺母18。
3. 卸下链轮护罩17和导板锁紧螺母18。
4. 戴上防护手套,抓住锯链16并将其缠绕在导板15上,确保锯齿朝向正确(图K,M)。
5. 确保锯链正确地安装在整个导板周围的槽中。
6. 将锯链放入链轮42。同时将导板上的槽与锯链张紧销43,以及工具侧的螺栓44对准,如图I。
7. 对准后,保持导板不动,更换链轮护罩17。首先安装链轮护罩的后部,将其向下旋转,并确保护罩上的螺栓孔与主壳体上的螺栓44对齐。
8. 安装导板锁紧螺母18,用随附扳手24顺时针旋转直至紧固,然后将螺母松开一整圈,保证锯链可以正常张开。
9. 顺时针旋转锯链张紧螺丝19以增加张力,如图I所示。确保锯链16紧贴导板15。拧紧导板锁紧螺母18直至紧固。

10. 按照“**调整锯链张力**”章节的说明进行操作。

调节锯链张紧度 (图A,H-L)

▲ 警告: 锯链张紧度不当会导致锯链从导板上脱落, 并可能导致重伤或死亡。

注意: 应在每次使用前调整锯链的张紧度。

1. 当高枝锯仍在坚固的表面上时, 检查锯链 **16** 的张力。如图K所示, 用中指和拇指轻轻地锯链从导板 **15** 上拉开 1/8" (3 mm) 后, 锯链就会被拉回, 此时的张紧度是适当的, 如图L所示, 导板和锯链底部之间不应有“下垂”。
2. 如需调整锯链的张紧度, 松开导板锁紧螺母 **18**。
3. 用扳手 **24** 的平头螺丝刀端旋转位于外壳前部的锯链张力螺丝 **19**。
4. 检查锯链的张紧情况, 如有需要可进行调整。
5. 请勿过度拉紧锯链, 这会导致过度磨损, 并会缩短导板和锯链的使用寿命。
6. 锯链张力适当后, 将导板锁紧螺母 **18** 拧紧。将导板锁紧螺母 **18** 拧紧至 6 ft-lbs (8 Nm)。
7. 新锯链在使用的前几个小时会有轻微的拉伸。在使用的前两个小时, 必须经常检查张力 (在断开电池取出电池包后)。

更换锯链 (图A,H,I)

▲ 小心: 锯链很锋利。处理锯链时一定要戴上防护手套。锯链很锋利, 静止状态下也可能割伤您。

▲ 警告: 运行中的锯链很锋利。为防止意外启动, 在进行以下操作前, 请确保电池从工具中取出。否则可能导致严重的人身伤害。

1. 如需卸下锯链 **16**, 应将锯放在平坦、坚固的表面上。
2. 如**安装导板和锯链**章节所述, 卸下链轮护罩 **17**。
3. 用扳手 **24** 的平头螺丝刀端旋转锯链张紧螺丝 **19**。逆时针旋转螺丝可使导板 **15** 后退, 并减小锯链上的张力, 从而将其拆除。
4. 戴上防护手套, 抓住锯链, 将磨损的锯链从导板的凹槽中取出。
5. 每次更换锯链时都要把导板翻过来, 以确保磨损均匀。
6. 将新锯链放入导板的槽中, 通过匹配链轮护罩 **17** 上锯链的箭头和图形, 确保锯齿朝向正确的方向, 如图K,M。
7. 遵循**安装导板和锯链**的指示操作。如需替换锯链和导板, 可联系您身边的授权服务中心。

当使用随附的0.325英寸节距7齿链轮 **42** (NA265339) 时, DCMP5640高枝锯可兼容以下得伟 (DEWALT) 配件:

锯链

30cm NA291648

导板

30cm NA373392

当使用3/8英寸节距6齿链轮 (90585879) 时, DCMP5635高枝锯可兼容以下得伟 (DEWALT) 配件:

锯链

25cm NA565542

导板

25cm NA734388

安装及调节肩带 (图N,O)

▲ 警告: 肩带只能挂在一侧肩膀上, 而不应跨躯干缠绕。见图O。

建议为总重量超过13磅 (6 kg) 的任何工具配备肩带 **26**。(总重量包含工具及电池。) 将背带 **26** 按图N所示安装至绑带底座 **25**, 并调节至适当平衡支撑状态

1. 将绑带底座 **25** 安装至绝缘手柄 **12** 上, 操作时需如图N所示捏紧绑带底座两侧的卡扣。绑带底座 **25** 可沿绝缘手柄 **12** 任意位置调节, 以适应不同体型的操作者。

2. 将肩带锁扣 **45** 卡入绝缘手柄 **12** 上的绑带底座 **25**, 如图N所示。调节肩带使其贴合肩部, 确保设备平衡并提供适当支撑。

锯链与导板润滑 (见图J)

自动注油系统

该高枝锯配备自动注油系统可持续为锯链和导板提供润滑油。

1. 油位指示器 **21** 显示油槽中的油位。若油位低于四分之一, 请取出电池并向储油槽内加注指定型号的润滑油。
 2. 切割完毕后, 应将油槽放空。
 3. 存放本设备前, 请务必将油槽放空。
- 注意:** 切勿在无油状态下操作高枝锯。

注意: 请使用高品质、可生物降解的导板和锯链油, 以确保锯链正常工作, 正常润滑。修剪树木时, 建议使用植物基导板和锯链油, 因为矿物油可能会对活树造成伤害。切勿使用脏污、用过或受污染的油。这可能会导致保工具失效。

注入储油槽

1. 逆时针拧开, 然后取下油盖 **22**。在油槽中注入推荐的导板和锯链用油, 直到油位达到油位指示器 **21** 的顶部。
 2. 重新盖上油盖并顺时针拧紧。
- 注意:** 请勿过度拧紧。油盖与油槽上设有对位标记。只需将油盖拧紧至标记对齐即可。
3. 定期关闭高枝锯并检查油位指示器 **21**, 以确保导板和锯链的油量充足。

调节导板油量 (图J)

DCMP5635与DCMP5640机型配备可调节润滑系统。可根据不同类型的木材和切割技术设置锯链和导板润滑油用量。当油量调节螺丝 **46** 位于最大 **47** 和最小 **48** 位置之间时, 锯链和导板的润滑进给速度适合大多数用途。

要减少流量:

1. 使用扳手 **24** 的螺丝刀端顺时针旋转油量调节螺丝 **46** 到最小 **48** 位置。

要增加流量:

1. 使用扳手 **24** 的螺丝刀端逆时针旋转油流调节螺丝 **46** 至最大 **47** 位置。

调节伸缩杆长度 (图A,P,Q) (仅适用于DCMP5635、DCMP5640型号)

▲ 警告: 使用或搬运高枝锯前, 务必检查螺纹套筒是否完全锁紧, 确保伸缩杆无松动。未锁紧螺纹套筒可能导致伸缩杆意外移动, 造成危险状况。

▲ 警告: 定期检查螺纹套筒, 确保其完全锁紧。

伸缩杆**3**可收起、伸展或固定在两者间的任意位置使用。

1. 按图P所示, 顺时针旋转松开螺纹套筒**13**。
2. 一手紧握伸缩组件**49**, 另一手按图Q所示拉出伸缩杆**3**, 即可取出收起的伸缩杆**3**。
3. 当伸缩杆达到所需长度后, 逆时针旋转螺纹套**13**将其锁紧, 以固定伸缩杆位置。
4. 使用前请确保伸缩杆**3**已固定到位。

运输高枝锯 (图R)

运输高枝锯时, 务必完全取下电池包**27**, 将伸缩杆**3**完全收回, 并用完全安装的护套**23**覆盖锯链**16**, 确保锯链完全不会漏出。

操作

使用说明

▲ 警告: 务必遵守安全指示和适用法规。

▲ 警告: 为降低严重的人身伤害风险, 在进行任何调整或取出/安装附件或配件之前, 请关闭工具并断开电池包连接。意外启动工具可能会造成伤害。

正确的握持姿势 (图T)

▲ 警告: 为了降低严重人身伤害的风险, 请务必如图所示那样正确放置双手。

▲ 警告: 为了降低造成严重人身伤害的风险, 预期有突然反作用力时**务必**握紧。正确的握持方式要求一只手握住主手柄**7**, 另一只手握住绝缘握把**12**。

注意: 务必始终佩戴肩带**26**, 并将带扣**45**连接至杆体组件**2**上的绑带底座**25**。


电量状态指示器 (图A,U) (仅限DCMP5640型号)






DCMP5640配备有充电状态指示器。

使用过程中会显示电池当前的电量。充电状态并不表示该工具的功能, 且将根据产品组件、温度和最终操作者的使用情况而有所不同。

- 充电状态LED指示灯**9**将亮起, 显示电池的电量百分比。
- 当四个充电状态LED指示灯**9**全部亮起时, 表示电池已充满电。
- 当一个充电状态LED指示灯**9**亮起时, 表示电量较低, 当电池放电时会闪烁。取出电池并充电。

充电状态LED指示灯状态

充电状态	充电状态LED指示灯颜色
	100% - 75% 白色

充电状态	充电状态LED指示灯颜色
	50% - 75% 白色
	20% - 50% 白色
	≤20% 白色
	低电量关机 白色闪烁。
	电池过热 全部四个, 红色并闪烁。

电池过载警告 (图A,U)

当电池温度过高时, 所有四个充电状态LED指示灯**9**都会亮起红色并闪烁。要清除电池过载警告, 请使电池冷却, 然后重新启动高枝锯, 再次开始切割, 此次需减小施力。使高枝锯以设定的速度进行切割。

过载指示灯 (图A,U)

DCMP5640设备配备有过载指示灯**10**。当电机或模块在运行期间过载时, 过载LED指示灯**10**将亮起琥珀色并闪烁。要清除过载指示灯**10**, 需重启设备并以较小力度重新开始切割作业。使设备以设定的速度进行切割。

过载LED指示灯**10**将在模块达到高温时亮起红色并闪烁。要清除过载指示灯**10**, 请先让设备冷却, 然后重新启动设备并再次开始切割, 此次需减小施力。使设备以设定的速度进行切割。

开/关开关 (图V) (仅限DCMP5635型号)

▲ 小心: 始终佩戴安全眼镜、头部防护装备和听力保护装备。如果操作环境中灰尘较多, 请佩戴过滤面罩。建议穿戴手套、长裤和厚实的鞋袜。勿使长发和宽松衣物靠近开口和活动部件。

▲ 警告: 请勿试图将触发开关锁定在开启位置。

注意: 双脚始终站稳, 双手紧握高枝锯, 拇指与其他手指环绕手柄**7**。

1. 要开启设备, 请用食指向前推动解锁杆**5**, 然后如图V所示扣动变速触发开关**4**。(工具启动后即可松开解锁杆。)

2. 要关闭工具, 松开变速触发开关**4**。

开启/关闭 (图U,V) (仅适用于DCMP5640型号)

▲ 警告: 启动时紧握工具。

▲ 小心: 始终佩戴安全眼镜、头部防护装备和听力保护装备。如果操作环境中灰尘较多, 请佩戴过滤面罩。建议穿戴手套、长裤和厚实的鞋袜。勿使长发和宽松衣物靠近开口和活动部件。

▲ 警告: 请勿试图将触发开关锁定在开启位置。

注意: 双脚始终站稳, 双手紧握高枝锯, 拇指与其他手指环绕手柄**7**。

1. 使用前需按下速度控制/唤醒按钮**8**以启动设备。

注意: 若操作杆**6**释放超过5秒, 设备将进入休眠模式。

2. 启动设备时,先握紧操作杆 **6**,再扣动变速触发开关 **4**。

3. 关闭设备时,请长按速度调节按钮/唤醒按钮 **8** 至少两秒钟。

调节电机转速(图U)(仅限DCMP5640型号)

DCMP5640设备配备有速度指示灯 **11**。速度指示灯LED **11** 将显示所选功率。本设备设有两种功率模式:ECO节能模式 **50**与标准模式 **51**。速度指示灯 **11** 可帮助您优化设备使用性能及每项作业所需的运行时间。

1. 使用前需按下速度控制/唤醒按钮 **8** 以启动设备。

注意:工具默认设置为标准模式 **51**。

2. 按下位于设备手柄上的速度控制/唤醒按钮 **8**,直至速度指示灯LED **11** 亮起。

注意:对于需要更长运行时间完成的大型项目,可使用ECO模式 **50** 运行。

3. 根据需求选择标准模式 **51**,适用于切割较粗枝干及需要更高转速的作业场景。

注意:运行时间将缩短。

速度设置LED指示灯颜色

功率设置	指示灯颜色
 — 50 节能模式	白色
 — 51 标准模式	未亮起

操作高枝锯(图A)

▲ 警告:阅读并理解所有说明内容。未能遵照以下所列说明会引发触电、火灾和/或严重人身伤害。

▲ 小心:工作结束后,务必再次释放锯链张力。锯链冷却时会收缩。若不将其松开,可能会损坏高枝锯。

重要事项:切勿操作损坏、调节不当或未完全牢固组装好的高枝锯。确保松开触发开关时,锯链 **16** 立即停止运转。切勿在电机运行或电池连接时调整导板 **15** 或锯链。

高枝锯修剪/修枝作业

▲ 警告:

· 切勿直接站在正在切割的树枝正下方。作业时务必避开坠物轨迹。

· 始终穿戴头部、眼部、足部及身体防护装备。穿戴身体防护装备有助于降低操作本设备时的受伤风险。

· 切勿站在梯子或其他不稳固的支撑物上使用高枝锯。作业时务必避开可能导致失衡的体位,严防重伤风险。

· 其他人员应与工作区域保持至少50英尺(15米)的距离。操作时分神易导致失控。

· **触电危险。**为防止触电危险,请勿在距架空电线50英尺(15米)范围内操作设备。始终检查周边区域是否存在隐蔽的电力线路。

· 请勿将高枝锯开关把手高举过肩。

除枝钩(图A)

▲ 小心:除枝钩并非安全带挂钩。

您的高枝锯配备了一个除枝钩 **20**,专门用于清除细小修剪枝条而设计。

使用高枝锯进行修剪(图A,T-W)

▲ 警告:使工具以设定的速度进行切割。请勿过载。

▲ 警告:修剪树木时:谨防发生反弹,可能导致重伤或死亡。参阅**防反弹护罩**章节内容,以避免反弹风险。请勿过度伸出杆体。确保双脚站立的表面牢固。保持双脚分开。将体重平均分配在两脚上。

1. 如图T所示,双手紧握高枝锯,确保握持稳固。拇指与手指需环绕主手柄 **7** 及绝缘握把 **12**。手指远离锯屑排屑槽 **30** (见图W)。

2. 请勿在树上、高难度位置,梯子或其他不稳定的表面上作业。您可能会失去对高枝锯的控制,从而导致严重伤害。

3. 按照以下步骤修剪树木。

a. 在开始切割前,请确保高枝锯已全速运转。开始切割时,将运转中的锯链 **16** 抵住树枝。紧握高枝锯以保持稳定,避免可能出现的弹跳或侧滑(横向移动)。

b. 操作高枝锯时请轻柔施力。在树枝下方距离树干6英寸(15厘米)处进行初次切割。使用导板顶部 **15** 进行此项切割。切割深度为树枝直径的三分之一。然后从顶部进行最终切割。若试图从底部锯断粗枝,枝条可能闭合夹住锯链。若试图从上方截断粗大枝条而未预先进行适量底切,可能导致枝干劈裂。请勿强行操作高枝锯。电机将过载并可能自动关闭。该设备在额定工况下的作业效能与安全性能更佳。

c. 在全速运转状态下,将高枝锯从切割位置移开。松开触发开关 **4** 即可停止高枝锯运转。放下高枝锯前,务必确保锯链已完全停止运转。

维护

DEWALT电动工具设计精良,可以长时间使用,而且只需极少的维护。要连续获得令人满意的工作效果,需要进行适当的工具维护和定期清洁。

▲ 警告:为降低严重的人身伤害风险,在进行任何调整或取出/安装附件或配件之前,请关闭工具并断开电池包连接。意外启动工具可能会造成伤害。

充电器和电池包无法维修。

请参阅本手册背面的维修中心联系方式,或访问www.2helpU.com。

定期维护可确保工具长期有效运行。每使用10分钟后,务必卸下电池(注意,锯链和导板可能发烫!),检查导板与锯链的张紧度是否正常,并按照**调节锯链张紧度和锯链润滑**章节进行润滑操作。

润滑

请参阅“**锯链和导板注油**”章节中描述的**自动注油系统**。

清洁

▲ 警告:电击和机械危险。清洁前请移除电池。

▲ 警告:为确保操作安全、有效,请注意清洁电器和通风槽。

▲ 警告:切勿使用溶剂或其他刺激性化学制品来清洁工具的非金属部件。这些化学物质可能会导致这些部位使用的材料劣化。请用布蘸温和的肥皂水擦拭。切勿使任何液体渗入工具,切勿使工具的任何部件浸在液体中

通风槽可以用干燥、柔软的非金属刷和/或合适的吸尘器进行清洁。请勿使用水或任何清洁剂。请戴上合格的护目装备和防尘面具。

电机通风滤网(图X,Y)

为确保您的高枝锯发挥最佳性能,务必保持电机通风滤网**53**的清洁。

1. 使用梅花螺丝刀头或平头螺丝刀卸下螺丝**54**,然后将通风滤网从电机外壳上取下。
2. 用温肥皂水冲洗电机通风滤网**53**。
3. 确保电机通风滤网**53**完全干燥后再重新装入电机外壳。
4. 安装并拧紧螺丝**54**,将电机通风滤网**53**固定在电机外壳上。

可选配件

▲ 警告:除了DEWALT提供的配件之外,其他配件均未经此产品兼容性测试,若将此类配件与本工具一起使用将存在安全隐患。为降低人身伤害风险,本产品仅使用DEWALT推荐的配件。

请向您的经销商咨询更多关于合适配件的信息。

锯链和导板

每使用几个小时后,取下链轮护罩、导板和锯链,用软毛刷彻底清洁。确保导板上的注油孔内没有杂物。用锋利的锯链更换钝锯链时,最好将锯链导板从下往上翻面。

链轮及链轮护罩(图A,H,I)

▲ 小心:锯链很锋利。处理锯链时一定要戴上防护手套。锯链很锋利,静止状态下也可能会割伤您。

▲ 警告:运行中的锯链很锋利。为防止意外启动,在进行以下操作前,请确保电池从工具中取出。否则可能导致严重的人身伤害。

1. 将锯放在平坦、坚固的表面上。
2. 如**安装导板和锯链**章节所述,卸下链轮护罩**17**。
3. 戴上防护手套,用干净的软毛刷擦去链轮护罩**17**内和锯链**16**或链轮**42**周围可能积聚的任何锯屑、树枝、藤蔓或其他碎屑。

4. 用扳手**24**的平头螺丝刀端旋转锯链张紧螺丝**19**。逆时针旋转螺丝可使导板**15**后退,并减小锯链上的张力,从而将其拆除。

5. 戴上防护手套,抓住锯链和导板并将其从工具上提起。
6. 戴上防护手套,用干净的软毛刷擦去可能积聚在导板**15**和锯链**16**周围的任何锯屑或其他碎屑。
7. 按照**安装导板和锯链、更换锯链**部分的说明安装锯链、导板和链轮护罩**17**,并按照**调整锯链张力**部分的说明在使用前适当调整锯链张力。

锯链修磨(图Z-BB)

▲ 小心:锯链很锋利。处理锯链时一定要戴上防护手套。锯链很锋利,静止状态下也可能会割伤您。

▲ 警告:运行中的锯链很锋利。为防止工具意外运行,在进行以下操作前,请确保电池已从工具中取出。否则可能导致严重的人身伤害。

▲ 警告:请勿过度修磨锯链间齿**56**,否则会增加反弹风险。如果锯链**16**修磨超过四次,请更换锯链。

锯链**16**每修磨一次,防反弹的性能就会略微下降一些,应特别注意。

建议锯链的研磨次数不超过四次。

注意:如果在切割时接触到地面、泥土或钉子,切割锯片**59**会立即变钝。

为了使您的工具发挥最佳性能,确保切割锯片**59**锋利是非常重要的。请遵循这些提示正确修磨锯链:

1. 为了达到最佳效果,请使用5/16" (4 mm)的锉刀和锉刀导向器来修磨锯链。这样可以确保磨削角度始终正确。
2. 将锉刀架平放在切割锯片**59**的顶板**55**和锯床挡板上。
3. 如图L所示,保持锉刀导向器**57**上正确的顶板**55**锉角30°线与锯链平行(从侧面看锉刀与锯链成60°)。
4. 先修磨锯链**16**一侧的切割锯片**59**。从每个切割锯片的内侧向外侧锉。然后将锯链翻转,对锯链另一侧的锯片重复上述过程(2、3、4)。
- 注意:**如图M所示,用平锉锉间齿**58**(锯片**59**前面的链节部分)的顶部。使其低于锯片尖端约0.25英寸(0.635毫米)。
5. 保持所有锯片长度相等,如图BB所示。
6. 如果顶板**55**或侧板**60**的镀铬表面有损坏,则应链修直到损坏去除为止。

▲ 小心:锉磨后,锯片将变得锋利,因此在此过程中要格外小心。

环境保护



分类回收。由此符号标记的产品和电池包不得与普通家庭垃圾一起处理。

产品和电池包包含可回收再生材料,从而降低对原材料的需求。请根据当地规定回收电子产品和电池包。如要获得更多信息,请参看www.2helpU.com。

充电式电池包

本电池包使用寿命长, 无法提供顺利完成工作所需的电力时, 必须进行充电。电池包技术寿命结束时, 请妥善处理以保护环境:

- 耗尽电池包的电量, 然后将其从工具上拆下。
- 锂离子电池可回收。请将其送至您的经销商处或当地的回收站。回收的电池包将被循环使用或妥善处理。

售后服务和维修

DEWALT维修中心拥有经过培训的人员, 能够为顾客提供高效、可靠的产品服务。如果您通过未获授权的维修中心进行维修, 我们不会承担任何责任。您可以参见产品包装内的《联络中心定位指南》手册, 通过热线电话、官网或社交媒体联系我们, 以查找距离您最近的DEWALT服务中心。

制 造 商: 百得德国公司
地 址: Black & Decker Str. 40 65510 Idstein, 德国
产 地: 江苏苏州

